

Baler's Choice

Buffered Acid for Baled Hay



Bale at a higher moisture without spoilage and retain the color and smell in baled hay.

BALER'S CHOICE An improved buffered acid for baling at higher moisture.

During the haying season, there are many times when it would be great to be able to harvest hay before it is dry enough to bale. Propionic acid has been around for a long time, and if you have ever used it, you know that it will keep some pretty tough hay from spoiling. But, you also know how dangerous it is to handle, and how tough it is on equipment.

Now there is Baler's Choice, a chemically buffered form of propionic acid. Pound-for-pound it does everything straight propionic acid will do, but without the corrosion or danger. With a pH of 6.0, it is about as neutral as rain water.

With Baler's Choice, hay can be baled at moistures up to 30%. Get a jump on the weather, reduce leaf shatter and bale more acres per day. It works on all types of hay including alfalfa, grass and other crops that are susceptible to spoilage at higher moistures. And, Baler's Choice also helps keep the color and smell in hay.

BALER'S CHOICE Two main ingredients to help make higher quality hay:

PROPIONIC ACID: The level of propionic acid in Baler's Choice is one of the highest on the market. No other ingredient comes close to propionic acid in controlling spoilage in hay.

CITRIC ACID: For many years, citric acid has been used in human foods to retain the color and smell. Now citric acid is available to hay producers in Baler's Choice. Hay put up with citric acid will retain more green color and smell fresher after storage.



USE BALER'S CHOICE on conventional square bales.

Conventional square bales will keep without treatment at moistures below 20% in well-ventilated storage, and below 18% in poorer storage locations. Baler's Choice will allow for baling at moistures up to 30% on conventional bales.

Use Baler's Choice as a management tool with your conventional square balers to:

- Bale hay on cloudy days
- Get started early.
- Bale later into the evening with heavier dew moisture



USE BALER'S CHOICE on round bales.

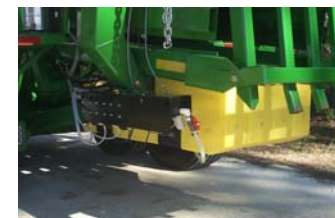
Baler's Choice works as well on large round bales as it does on small square bales. Loose core round bales are safe to bale without preservative at



moistures under 20%. Dense core bales have to be 18%. With the added baling capacity of a round baler, it is important to be set up to apply preservative. Hay can be baled at moistures up to 30% with a large round baler. The hours of operation can be extended. Although no preservative product can reduce outside weathering, Baler's Choice can keep the quality consistent through the entire round bale.

USE BALER'S CHOICE on large square bales.

Large square balers have added productivity to many hay-making operations. They also require a closer watch on moisture, since they have to bale hay at levels under 16% moisture to produce mold and dust-free results. Baler's Choice has been formulated with the needs of the big square baler operator in mind.



By using Baler's Choice in accordance with the label recommendations, quality consistency can be routine in high capacity haying with a big square baler.

Baler's Choice (EPA Reg. No. 73877-1) is one of the strongest products on the market and it has an added ingredient for retaining the color and smell in baled hay.

Guaranteed analysis:

| | |
|---|-------|
| Propionic Acid | 64.5% |
| Citric Acid | 5% |
| Ammonium Hydroxide, De-ionized Water T-Det DD5, Green Dye | 30.5 |



120 Lbs



450 Lbs



1,800 Lbs

APPLICATION RATES

For conventional and large round balers

| hay moisture | stem moisture | dew moisture only |
|--------------|---------------|-------------------|
| 17% to 22% | 4 lb/ton | 2 lb/ton |
| 23% to 26% | 8 lb/ton | 6 lb/ton |
| 27% to 30% | 16 lb/ton | 12 lb/ton |

For large square balers

| hay moisture | stem moisture | dew moisture only |
|--------------|--------------------|-------------------|
| 17% to 22% | 6 lb/ton | 3 lb/ton |
| 23% to 26% | 10 lb/ton | 8 lb/ton |
| 27% to 30% | <i>Do not bale</i> | 16 lb/ton |

Management Guidelines for using **BALER'S CHOICE**

1. A Harvest Tec automatic application system is recommended. It accurately measures moisture on the go and adjusts application rate automatically. It also measures baling speed and will adjust application based on how fast the bales are being made.
2. If the baler is not equipped with a Harvest Tec automatic application system:
 - a. Keep track of the moisture. Use a moisture tester often. The most reliable test comes from bales already formed using a probe or an in-chamber tester. Remember that the moisture of hay can change frequently and rapidly.
 - b. Treat the hay for the highest moisture in the bale. Take multiple tests and look for the high readings. If an ultra-high reading comes from an unusual slug, don't worry about that, but look for a high reading in the rest of the bale.
 - c. Keep track of the baling rate to make sure the product is being applied properly. Remember that wet hay will weigh more per bale. Compare the actual product used against the hay baled per bale (large package) or per load (conventional bale) basis.
3. Store hay to prevent migration to one part of the haystack. Storage facilities for higher moisture hay must be well ventilated. If the moisture migrates to one part of the barn, that part may not have enough product to protect it as the moisture starts to climb.
4. Apply the product carefully. The product migrates very little, so make sure that coverage is complete. Consult with your dealer for the proper nozzle placement on your particular baling equipment. With application rates under one percent of the hay being baled, coverage is critical.



Phone 1-800-635-7468 - E-mail: info@harvesttec.com
www.harvesttec.com

