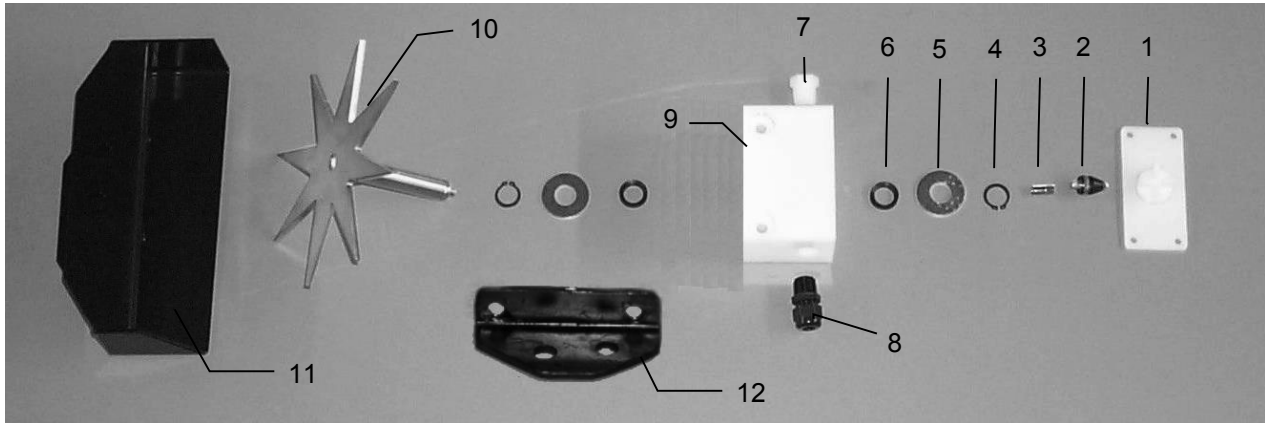
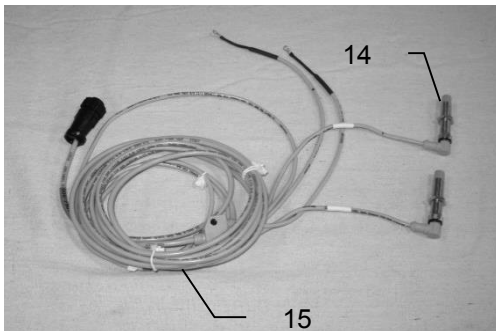


Parts Breakdown

Star Wheels and Bale Rate Sensors

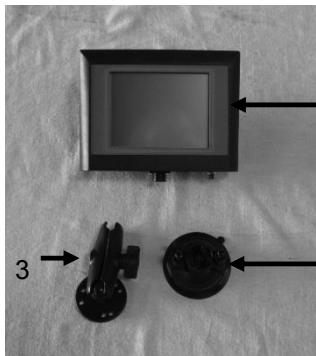


<u>Ref</u>	<u>Description</u>	<u>Part#</u>	<u>Qty</u>	<u>Ref</u>	<u>Description</u>	<u>Part#</u>	<u>Qty</u>
1	Block cover	006-4641B	2	9	Star wheel block	006-4641D	2
2	Electronic swivel	006-4642A	2	10	Star wheel sensor	030-4641C	2
3	Swivel insert	w/ Ref # 10	2	11	Twine guard – left	001-4645	1
4	Snap ring (per side)	006-4641K	2		Twine guard – right (prox)	001-4644	1
5	Washer (per side)	w/006-4641K	2	12	Prox Sensor Holder	001-4644SS	1
6	Dust seal (per side)	w/006-4641K	2				
7	Plug fitting	003-F38	2	1-10	Star wheel assembly	030-4642	2
8	Wiring grommet	008-0821A	2				



<u>Ref</u>	<u>Description</u>	<u>Part#</u>	<u>Qty</u>
14	Bale rate sensor	006-7303S	2
15	Moisture and bale rate harness	006-7303HS	1
	Complete Assembly	006-7202	

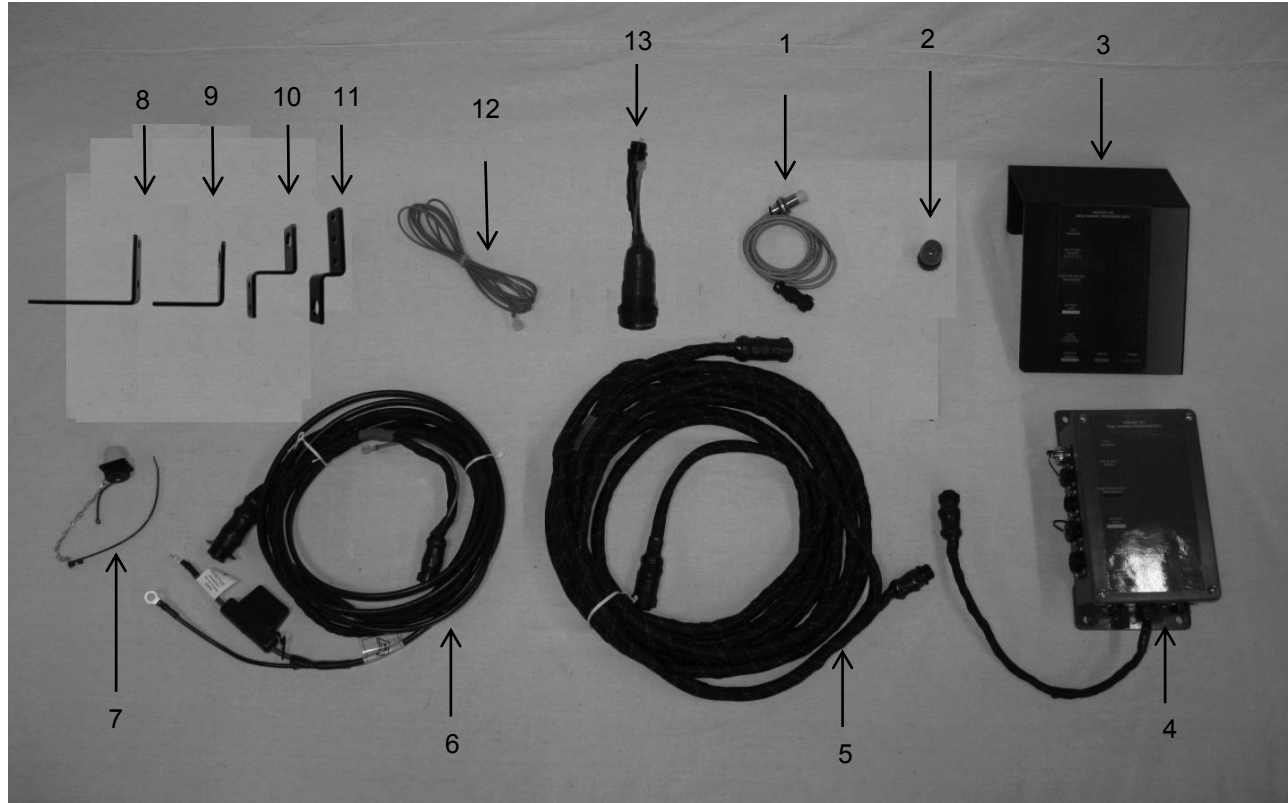
Optional Touch Screen Display (TSD) and Bluetooth Receiver



1	Touch Screen Display	006-6670
2	Suction Cup Mount	001-2012SCM
3	RAM Mount	001-2012H
	Complete Kit	030-5670A
4	Bluetooth Receiver	030-6672A



Parts Breakdown for 600SS Series Control and Harnesses



<u>Ref</u>	<u>Description</u>	<u>Part Number</u>	<u>Qty</u>
1	End Of Bale Sensor	006-7400	2
2	Terminating Connector w green cap	006-5650Z	1
3	DCP Shield/Cover	001-5650X	1
4	DCP Main Control LS 600 AUTO	006-6671SS	1
5	DCP Baler Harness 30 FT	006-6650LS2	1
6	DCP Tractor Harness	006-6650TM	1
7	Dust Plugs	006-5651PLUGS	1
8	SC Bracket Inline SSQ	001-4648SI	1
9	SMSQ End of Bale Bracket	001-4648SS	1
10	EOB Bracket Inline SSQ	001-4648SC	1
11	Round Baler End of Bale Bracket	001-4648RB	1
12	Key Switch Wire	006-5650K	1
13	ISOBUS Tractor Plug	006-6670A	1
NP	Y Splitter for EOB & Stroke Counter	006-7400Y	1