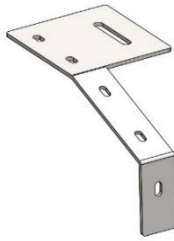
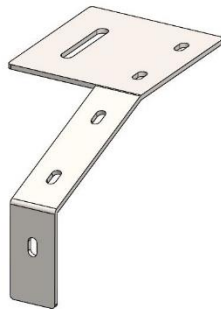


CNH (3 x 3) Wind Guard Installation Guide (030-6707WG3)

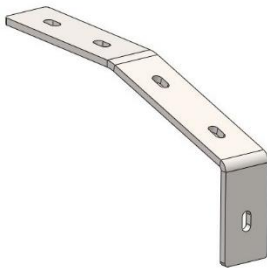
Materials Provided:



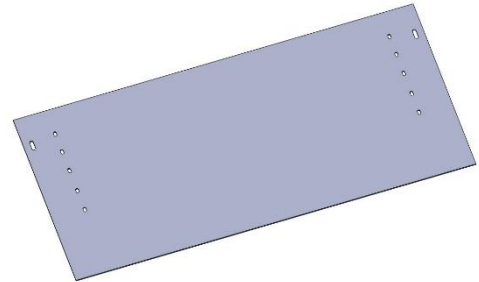
1x 001-6707MER



1x 001-6707MEL



2x 001-6707MF



1x 001-6707GM3

2x 5/16x1.5" Hex Bolt

10x 1/4x1" Hex Bolt

10x 1/4" Hex Nut

2x 5/16" Hex Nut

20x 1/4" Flat Washer

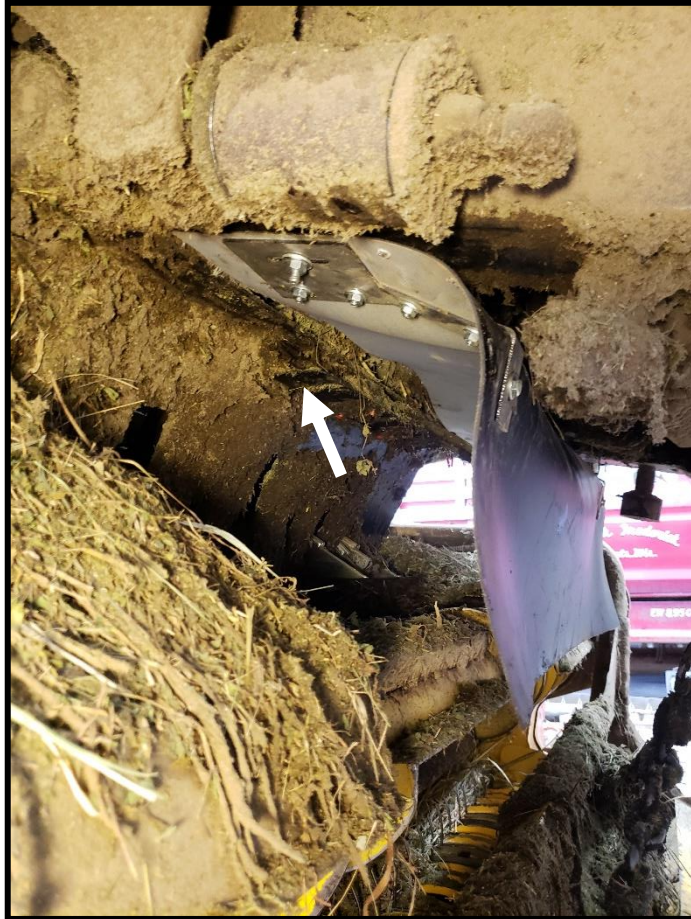
4x 5/16" Flat Washer

Materials Required:

-1/2" and 7/16" socket and wrench

-Ratchet or Impact Driver

Installation



For a visual of the installation task, the image below displays the installed wind guard.

Step 1: Locate the factory drilled holes on both sides of the baler tongue. The general location of these holes are shown in the image to the left. If holes are not present or a different location is desired, drill appropriately.

Step 2: Assemble the wind guard. Start by locating all materials listed previously. Next, align the $\frac{1}{4}$ " holes of the guard material (001-6707GM3) with the $\frac{1}{4}$ " holes of the 001-6707MER/MEL brackets. *(It is recommended to place the guard material on top of the brackets)*. Next align a 001-6707MF backing plate with the $\frac{1}{4}$ " holes on each end of the assembly. *(The rubber guard material should now be sandwiched between the mounting bracket and backing plate)*. Finally, fasten together with the $\frac{1}{4}$ " hardware provided.

Step 3: Bring the assembled wind guard to the baler. Using the $\frac{5}{16}$ " hardware, fasten the wind guard to baler using the outside holes of the brackets and the holes located or drilled from **Step 1**.