

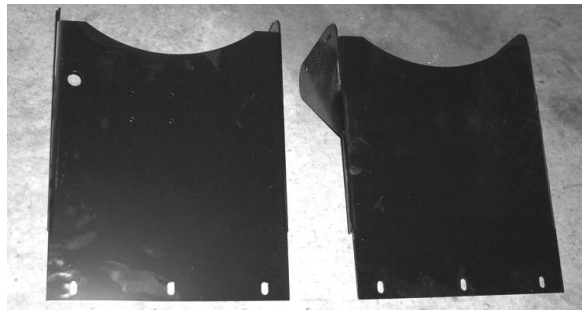
# Parts Breakdown Tank, Saddle & Legs 100 Gallon

Vermeer, Claas, and Krone Balers with 100 Gallon Tank

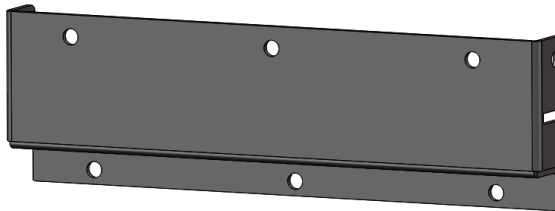


## Vermeer, Claas and Krone Balers Saddle Legs

Part#: 001-6706V



\*If the applicator is being mounted on a **Krone 870 HDP** baler, two leg adapter brackets will be needed for proper tank leg installation (below). Part number 001-6707KV.



## Claas 3300 Saddle Legs

Part #: 001-6706C

