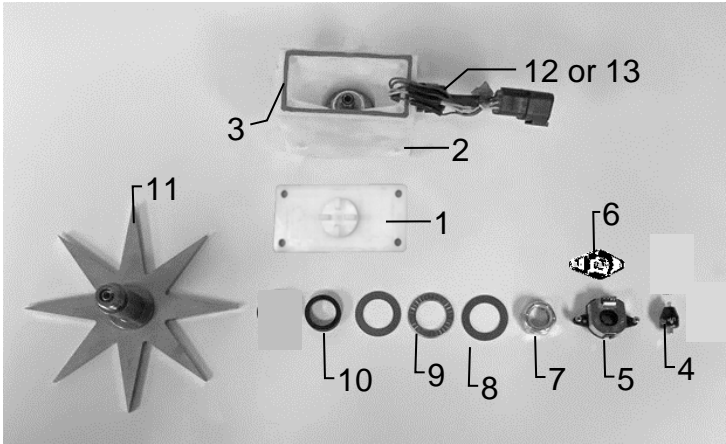


## Star Wheel Sensors



<u>Ref</u>	<u>Description</u>	<u>Part#</u>	<u>Qty</u>
1	Block Cover	006-4642UC	1
2	Star Wheel Block	006-4642UB	1
3	Star Wheel Gasket	006-4642UG	1
4	Electric Swivel	006-4642A	1
5	Encoder	006-4512E	1
6	Encoder Mount	006-4512P	1
7	Nut for Star Wheel	006-4642U	1
8	Bearing	006-4642TB	1
9	Thrust Washer	006-4642TA	2
10	Dust Seal	006-4642DSL	1
11	Star Wheel w/Insert	030-4642US	1
12	Encoder Harness	006-7307EM	1
	(6 pin)		
13	Moisture Harness	006-7307M	1
	(2-pin)		

### Replacement Assemblies

1-12	Star wheel assembly (w/ Encoder)	030-4642UE
1-4	Star wheel assembly (w/o Encoder)	030-4642U
7-11,13		