

# Installation Manual

## **Model 735Z** **55 Gallon Automatic Preservative Applicator**



---

P.O. Box 63 • 2821 Harvey Street • Hudson, WI 54016  
800-635-7468 • [www.harvesttec.com](http://www.harvesttec.com)



# Harvest Tec 735Z Table of Contents

	<u>PAGE</u>
<b>Introduction</b>	<b>3</b>
<b>Tools Needed</b>	<b>3</b>
<b>Installation of Applicator</b>	<b>4-10</b>
Installation of Mounting Brackets and Tank	4-5
Mount Pump Plate Assembly	6
Placement of Spray Nozzle Assembly	7
Installation of Plumbing	7
Installation of Moisture Sensing Pads	8
End of Bale Sensor	9
Tractor Set Up	10
Display Options	11
<b>Wiring Diagram</b>	<b>12</b>
<b>Pin Outs</b>	<b>13-15</b>
<b>Parts Breakdown</b>	<b>16-26</b>
Base Kit	16-17
Pump Assembly	18
Control Box and Wiring Harnesses	19
End of Bale Sensor	19
700 Solenoid Package	20
Moisture Sensor	21
Optional High Moisture Kit	21
Parts Bag Packages & Hoses	22
Spray Shield	23
Optional iPad Display Kit	24
Optional Android DisplayKit	25
Optional HT VT Display Kit	26
<b>Warranty Statement</b>	<b>27</b>

## Introduction

Congratulations and thank you for purchasing a Harvest Tec Model 735Z applicator. Please read this manual carefully to ensure correct steps are taken to attach the applicator to the baler. This applicator is designed to apply Harvest Tec buffered propionic acid. Use of alternative products may cause complications. Including inaccurate readings from the flow meter and damage to all parts. Resulting in the warranty being void. A parts break down for the applicator is located in the back of the manual.

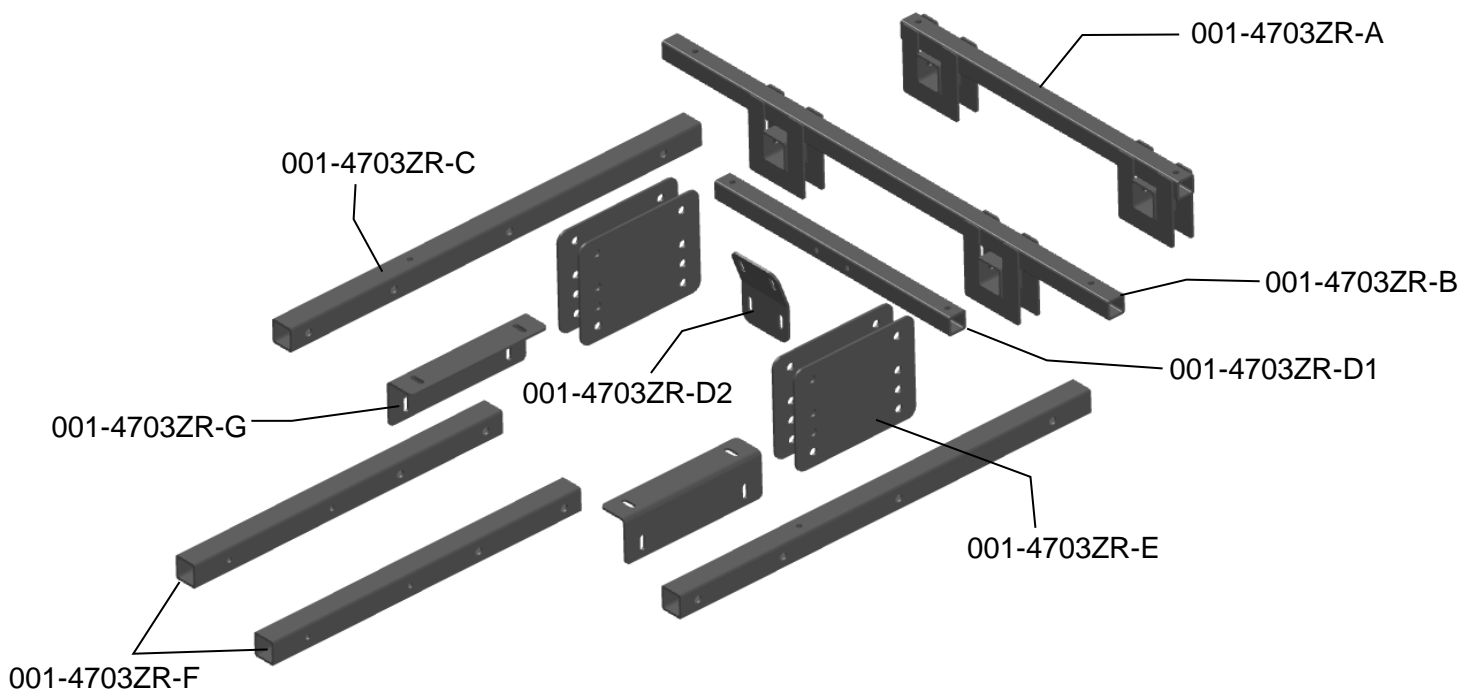
## Tools Needed

- Standard socket set
- Standard screw driver or 5/16" nut driver
- Side cutter
- Hose cutter
- Crescent wrench
- Hammer
- Metal drilling and cutting tools
- Center Punch

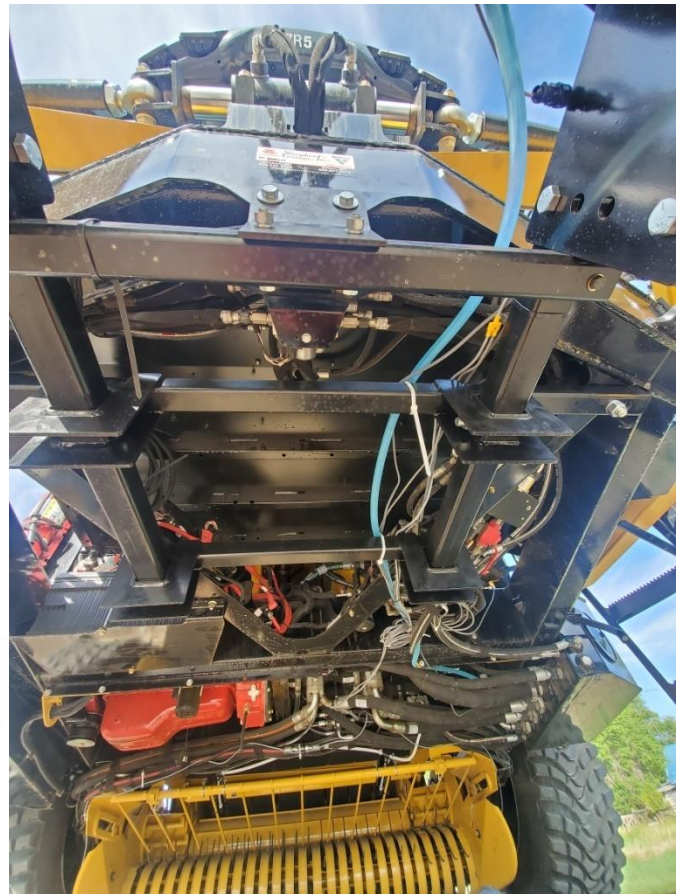
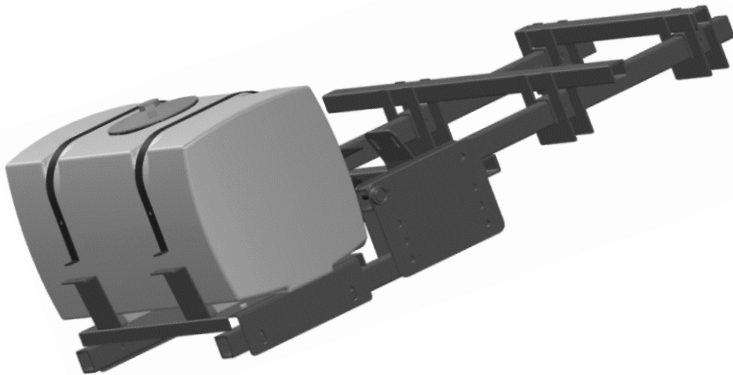
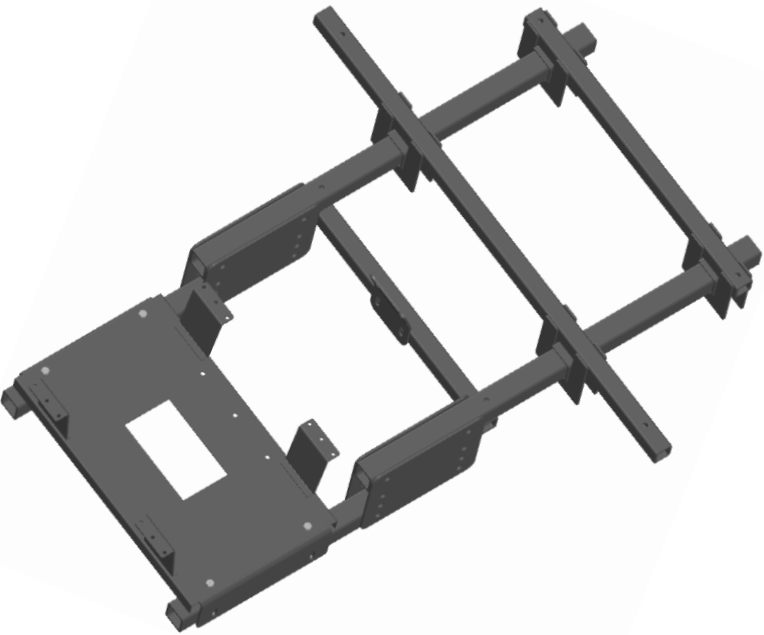
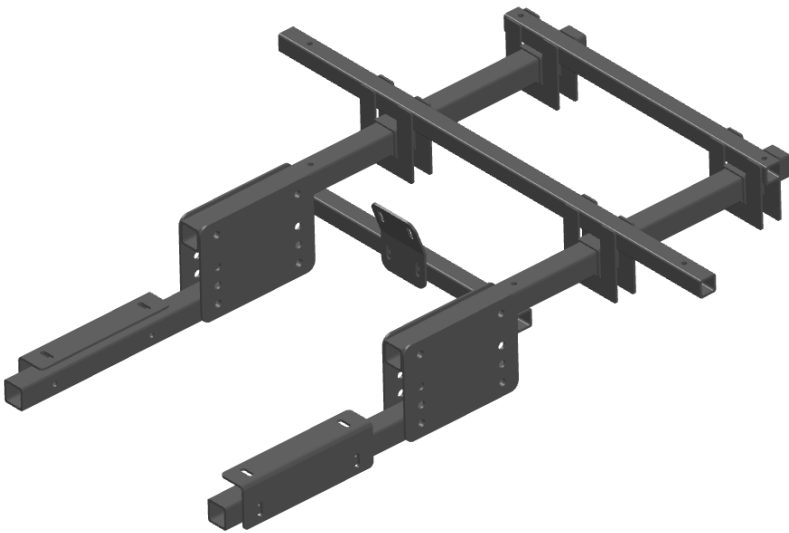
# Installation of Applicator

## Installation of Mounting Brackets and Tank

1. Locate parts 001-4703ZR-A, 001-4703ZR-B, two 001-4703ZR-C and four  $\frac{3}{4}$ " x 4  $\frac{1}{2}$ " bolts, lock washers and nut.
2. Line up 001-4703ZR-A and 001-4703ZR-B about 18 inches apart on the ground. Slide part 001-4703ZR-C into square mounts and secure with  $\frac{3}{4}$ " x 4  $\frac{1}{2}$ " bolts, locks, and nuts to holed in place. Note there are two sets of  $\frac{3}{4}$ " holes on the 001-4703ZR-C. Use the set that is about 18 inches apart.
3. Locate part 001-4703ZR-D1 and two  $\frac{1}{2}$ " x 5  $\frac{1}{2}$ " bolts, locks, washers, and nuts. Bolt part 001-4703ZR-D1 to the top of the two 001-4703ZR-C with this hardware.
4. Locate part 001-4703ZR-D2. Bolt to the front of 001-4703ZR-D1 with  $\frac{1}{2}$ " x 3  $\frac{1}{2}$ " bolts, washers, locks, and nuts. Do not fully tighten down.
5. Using a lift, bring the assembly up under the cab of the baler. Part 001-4703ZR-D2 should line up with holes in the front part of the baler. Mark the half inch holes at the ends of the 001-4703ZR-A and 001-4703ZR-B that line up with the structural parts under the cab. Lower assembly out of the way and drill these four holes with a  $\frac{9}{16}$ " drill bit. (Note. Do not drill into hydraulic lines or electrical wires.)
6. Once holes have been drilled. Lift assembly back up under cab and attach to baler with four  $\frac{1}{2}$ " x 3  $\frac{1}{2}$ " bolts, washers on both sides, locks, and nuts.  $\frac{3}{4}$ " hardware is provided if you would want to use this. However, part 001-4703ZR-A and 001-4703ZR-B will need to be drilled out for the  $\frac{3}{4}$ " bolts. The 001-4703ZR-D2 will attach to the front mount with  $\frac{1}{2}$ " x 2" bolts, washers on both sides, locks, and nut.
7. Attach two 001-4703ZR-E to each 001-4703ZR-C (one on each side) sticking out the front of the baler. Use  $\frac{3}{4}$ " x 4  $\frac{1}{2}$ " bolts, locks, nuts. Do not fully tighten down yet.
8. Attach 001-4703ZR-G to the 001-4703ZR-E at the height you desire to keep the tank about the windrow. Note the lower the take the closer it is to the windrow coming into the baler. The higher it will obstruct your view. Use  $\frac{3}{4}$ " x 4  $\frac{1}{2}$ " bolts, locks, and nuts to secure.
9. Attach 001-4703ZR-G to 001-4703ZR-F with  $\frac{1}{2}$ " x 4" Bolts, washers, locks, and nut. Do not fully tighten down. (Note: angles will be pointing toward each other.)
10. Place saddle assembly on 001-4703ZR-G and secure with  $\frac{1}{2}$ " washer, locks, and nuts.
11. Tighten all hardware down.



Installation of Mounting Brackets and Tank (continued)



## Mount Pump Plate Assembly

Locate parts bag 8. Using two 3/8" x 1/4" bolts, locks, washers, and nuts. Mount the U-shaped pump plate mount 001-4647 (right) onto the tank saddle in the mounting holes located between the strap brackets on back of saddle (figure 7).

Connect the pump plate mounting bracket (001-4648X), shown in figure 8, using two 3/8" x 1 1/4" bolts, nuts, locks, and flat washers to the mounting bracket. Install the pump plate as shown completed in figure 9.

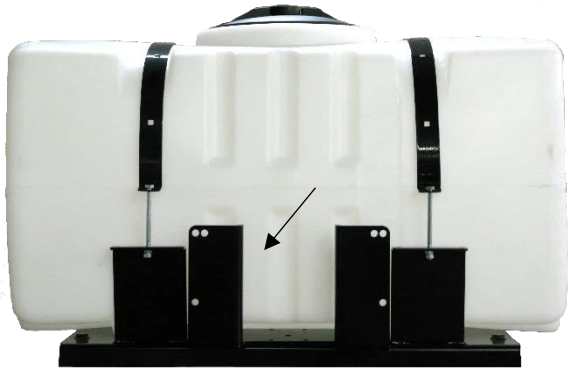


Figure 7



Figure 8

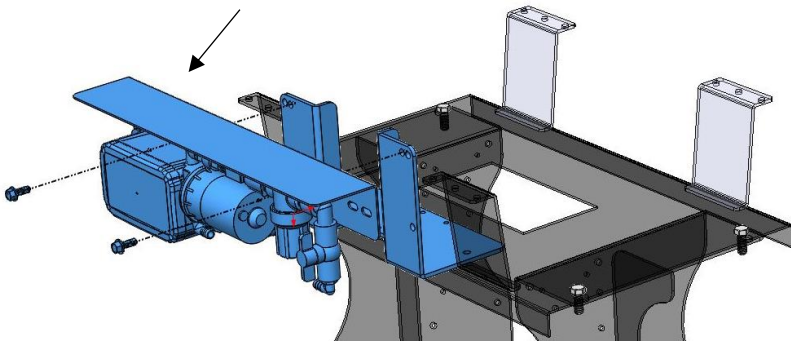


Figure 9

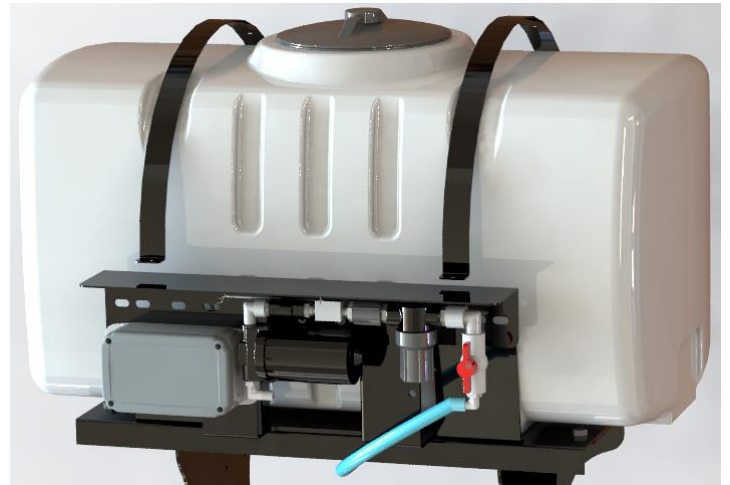
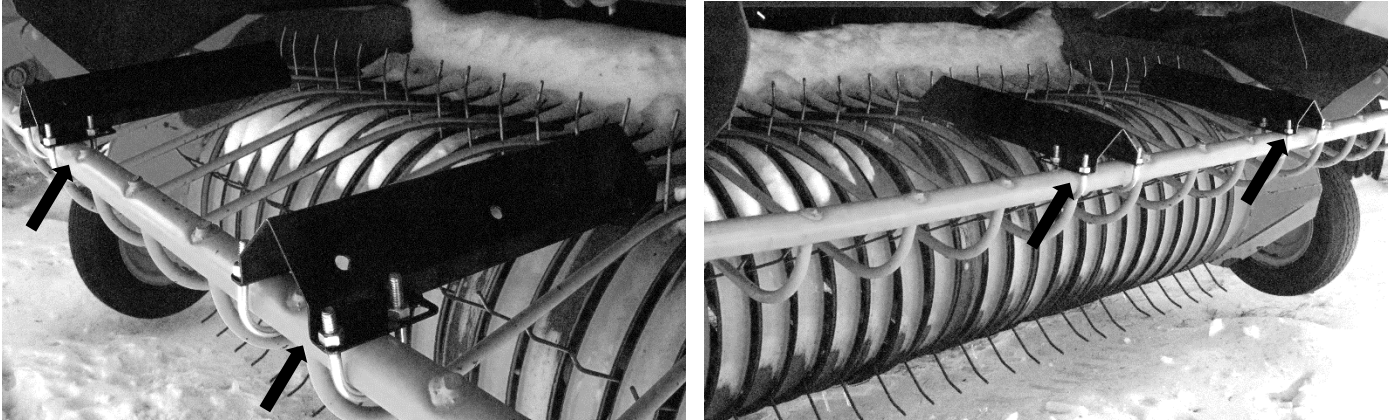


Figure 10

## Placement of Spray Nozzle Assembly

The cross bar on the wind guard above the pick-up head provides a mounting point for the nozzle holders (001-4714). Mount the nozzle holders on the wind guard, using the supplied U bolts (001-4714UBL). Measuring from the center of the baler, the nozzle holders will need to be 6" (15cm) apart on a 4' (1.2M) and 9" (23cm) apart on a 5' (1.5M). Do not fully tighten.

Position the nozzle holders so that the tips spray in a horizontal direction over the top of the baler's pickup. The tips should be located so that they will be between 14" and 18" (35 - 45 cm) from the normal path of hay. Make sure the nozzle holders do not interfere with the tying system. \*It is recommended to test the system with water prior to field operation. This will ensure the fan pattern from the tips reaches the outside edges of the pickup while having a slight overlap in the center.



## Installation of Plumbing

### A. Intake

Locate parts bag 16. Use the 003-EL3412 on the bottom of the tank to route 1/2" line (002-9001) to the 003-A1212 or 003-EL1212 fitting used on the ball valve attached to the pump plate. Attach hose clamps (003-9003) on both of the fittings.

### B. Discharge

Route the 1/2" hose from the pump output toward the front of the baler and connect to the solenoid assembly (SOL-3SP-A). Secure the solenoid assembly and hose along baler, positioning the solenoid as close to the spray tips as possible while remaining in an accessible location. Connect the 1/4" hose to the outgoing side of the solenoid to tip assembly.

### C. Low, Standard and High Output Tips

Your baler comes standard with one set of tips.

Optional High Output Tip kit 700RBHTK is available for increased application rates.

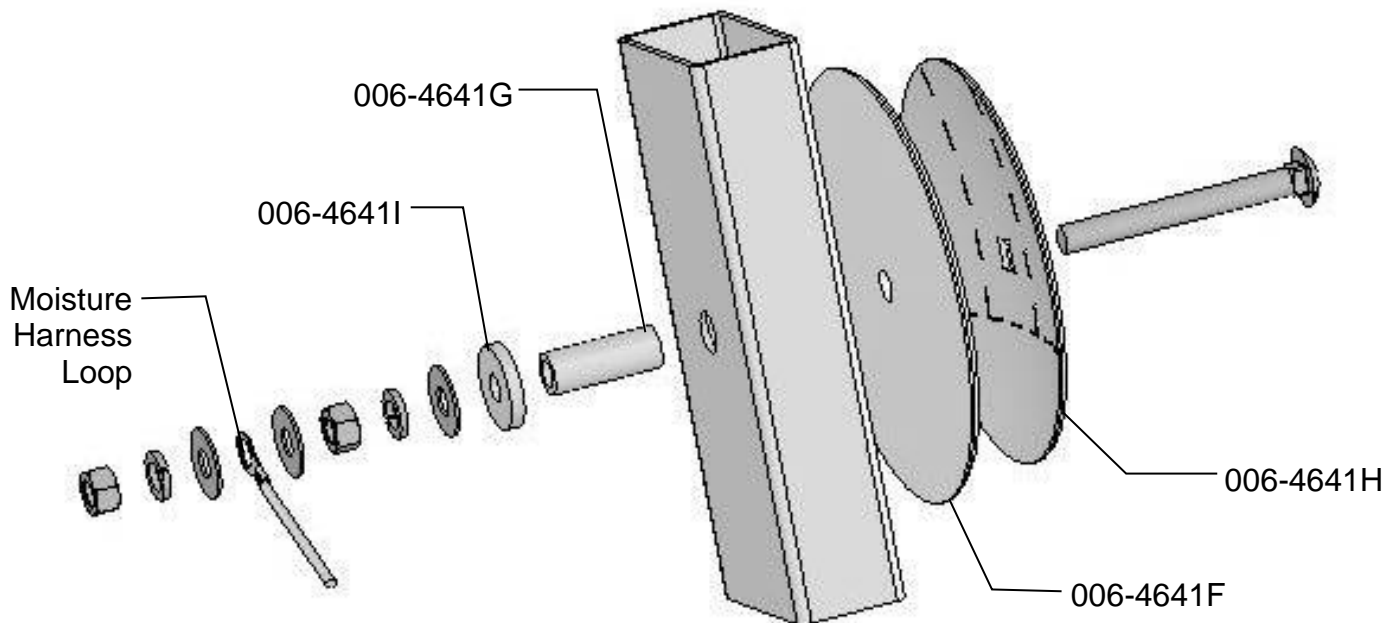


## Installation of Moisture Sensing Pads

\*Most balers will have a moisture system already installed on the baler. If not, follow the instructions below. Note: If your baler does have a factory moisture system installed. You can use the factory moisture disc. However, you will need to disconnect the wires leading to both sensors and tape them up. You cannot have the balers moisture wires and Harvest Tec's moisture wires connected to the moisture disc at the same time.



1. If your baler is equipped with bale shaping pads, remove disc and use existing that will need to be drilled to 3/4" (19mm) to install new moisture sensing discs. If the discs are welded, the welds will need to ground off for disc removal.
2. If your baler is not equipped with bale shaping pads you will need to drill a hole in the chamber directly behind and above the starting roll (Figure 1).
3. The mounting hole will be 3/4" (19mm) in diameter. Use a plastic pad (006-4641F) and place it into the baler to use as a template. The bottom edge of the pad will be placed 1" (25mm) up from starting roll and 2" (51mm) from the back of the bale chamber. (Figure 1)



4. Depending on the baler the bolt may need to be trimmed for proper fit.
5. Tighten all of the hardware to 50 ft/lbs (68 N/m).
6. Make sure that the plastic pad is protecting all metal surfaces of the disc from touching baler.
7. Run the moisture wire harness (006-7307RB1) from pump plate area to each disc and secure
8. Apply silicone over nuts and washers.



## Installation of End of Bale Sensor

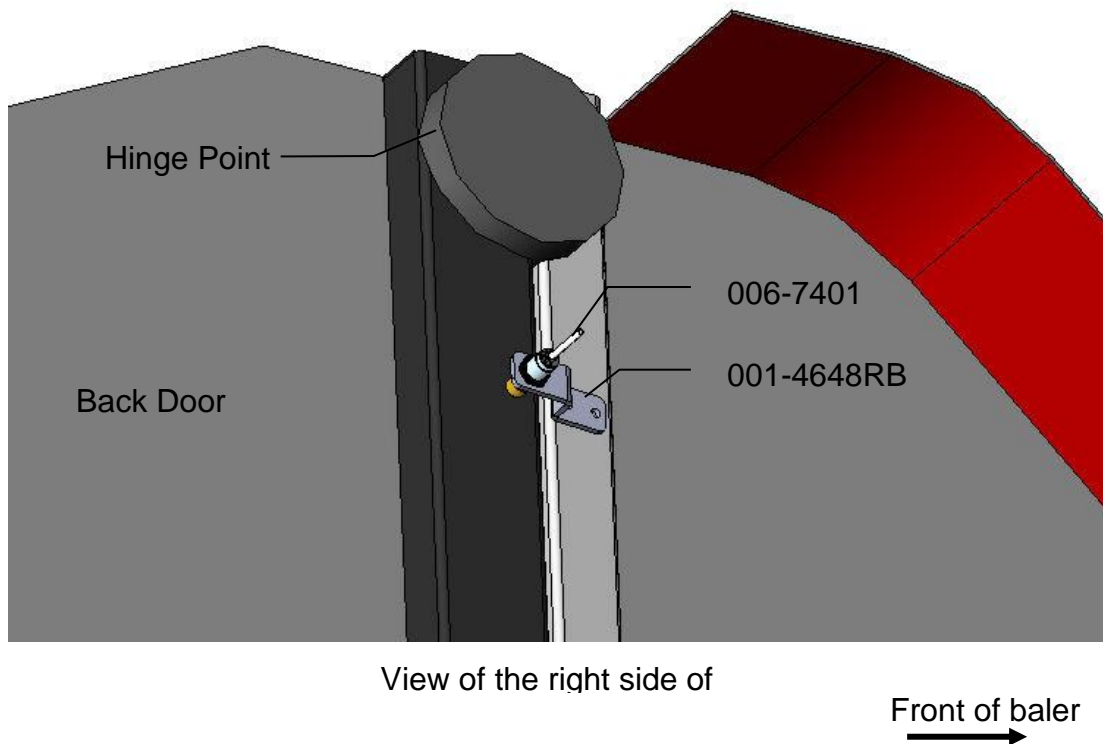
The bale rate timer/ end of bale sensor is used to determine when the baler door is open upon bale completion. With this information the system is able to change the tons/hour automatically (see Operating Instructions, Automatic Mode).

Locate the sensor (006-7401) and the sensor bracket (001-4648RB). On the right side of the baler find a location 1"– 6" down from the pivot point, in a well-suited place, to mount the bracket. Check for clearance with hydraulic cylinders before mounting the bracket. The bracket should be mounted to the front side of the hinge point, with the sensor aligned over the back door.

Mark and drill two 1/4" (7mm) holes and install the bracket using two 5/16" x1/4" self-tapping bolts.

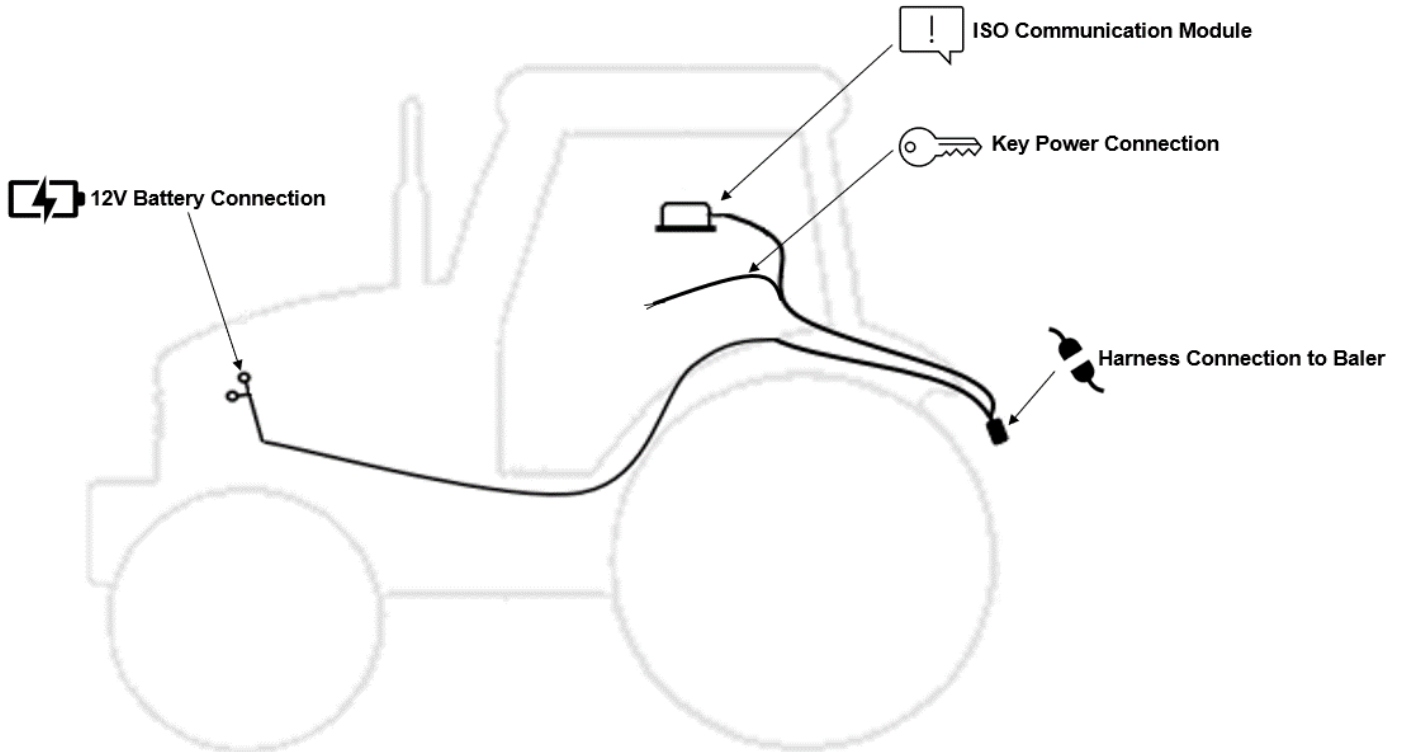
Install the sensor into the bracket and leave 1/4" (7mm) of clearance between the end of the sensor and the door.

The harness will need to be routed towards the Processor. Secure with cable ties and take care to avoid pinch points. The harness extension (006-7401EXT) may need to be used.



**\*Additional parts and harness extensions have been included to allow you to easily disconnect the baler unit from the power unit, use as needed.**

## Tractor Setup



The general tractor setup of the 700 Series applicator can be seen above. The main harness of interest is the tractor power/communication harness (006-7651C). This harness will connect at the tractor battery, to the ISO Communication Module (ICM) mounted in the cab, a keyed power connection point, and connect at the hitch area to the baler power/communication harness (006-765B). View below to see highlighted installation instruction:



**12V Battery Connection**

The 12V battery connection must be at the tractor battery. Connection to alternative locations such as an accessory port can cause problems with applicator system.

**\*MUST BE CONNECTED DIRECT TO TRACTOR BATTERY TERMINALS\***



**ISO Communication Module**

The ISO communication module is to be mounted inside the cab. Other mounting locations can lead to issues with weathering and operation. Once installed and the system is powered, a green light will turn on with the ICM module.



**Key Power Connection**

Ensure a solid keyed connection is found inside the cab and wired into. Poor keyed power connection can result in applicator system issues.



**Harness Connection to Baler**

The tractor harness connects at the hitch to baler power/communication harness (006-765B). This will allow the system components to communicate with one another. Ensure connections are debris and corrosion free.

## Display Options

### Optional Harvest Tec Display

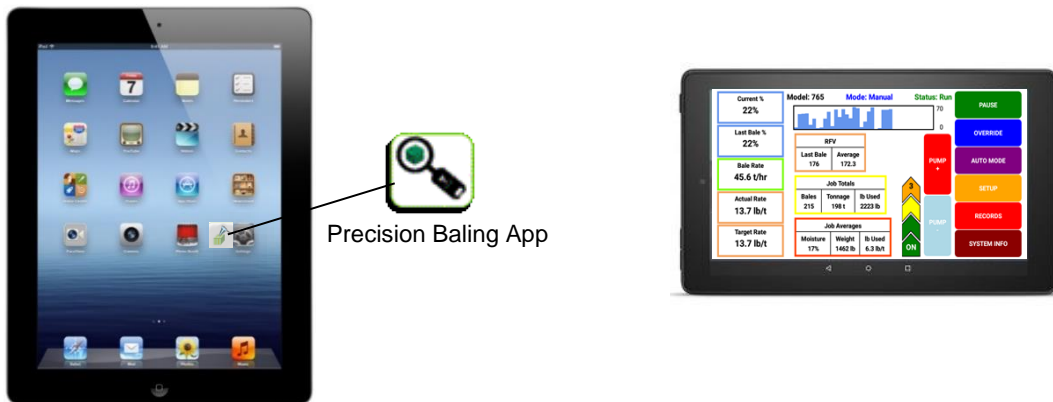


The 700 series Harvest Tec Display will allow you to set your real time baling parameters to ensure the most precise application to every bale. This is done by utilizing the improved touch technology to select objects, enter data, and swipe through operational screens.

The Harvest Tec Display offers easy integration by connecting to the additional CAN plug on the 006-765IC harness. Once, connected the Harvest Tec display will power up with applicator system.

**Note: The Harvest Tec Display must be used as a standalone display, the baler cannot run both integrated and on the Harvest Tec Display. Must be one or the other. Removal of the 006-765VA or integration harness is required when equipped. 006-770R Terminator must be placed on only one CAN/IDM port on the baler harness.**

### Optional Tablet Display



The iOS or Android Tablet displays offer the ability to communicate with the 700 series applicator system via hard-wired connection to the ISO Communication Module (ICM). Recommended to use a quality communication cable to connect with the IIC- adapters are not supported. Through the free Precision Baling App, the operator can set real time baling parameters to ensure the most precise application to every bale.

This provides a multi-use option while utilizing the improved app to select objects, enter data, and easily switch through operational screens. The Tablet Display offers easy integration by connecting a charging cable to the USB port on the ICM module. Once connected the Harvest Tec applicator will display upon opening the app and powering up the applicator system. Tablets can be used in addition to integrated baler VT display.

**Required to be running a current supported iOS operating system.**

\*iPad is a trademark of Apple Inc., registered in the U.S. and other countries.

## Wiring Diagram – 731, 735Z, 737, 738K, 747, & 749 Models

1. Connect the power harness (006-7651C) to the tractor battery (12 volt) using the red wire with fuse to the positive side and the black wire to the negative.



**A. The power harness must be connected to the battery!**

**CONTACT HARVEST TEC BEFORE MODIFICATIONS.**

*\*The unit will draw more amps than convenience outlets can handle. Any modifications of the power harness will void systems warranty\**

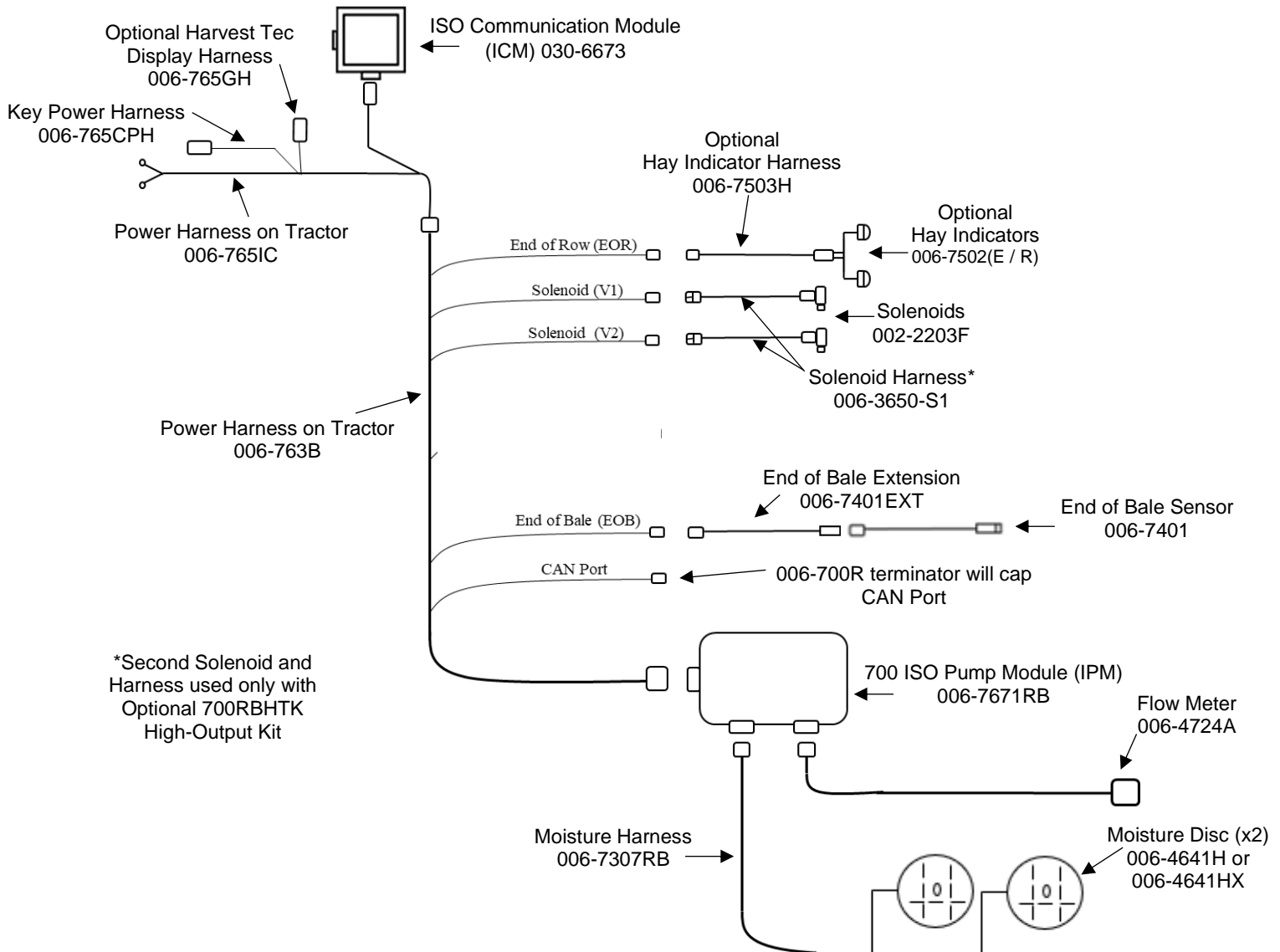
**B. This unit will not function on positive ground tractors.**

**C. If the unit loses power while operating it will not keep track of accumulated pounds of product used.**

2. The power harness on the tractor (006-7651C) will run from the tractor battery to the hitch. The power harness on the baler (006-763B) will connect to the tractor power harness (006-7651C) at the hitch.
3. Connect the keyed power wire (006-765CPH) to a keyed power source on the tractor.

**The keyed power wire must connect to a keyed source or the unit will not power up correctly.**

4. Attached the ISO Communication Module (006-6673) to the tractor power harness (006-7651C).
5. Attach the End of Bale (EOB) connection on baler harness (006-763B) to the EOB Sensor (006-7401).
6. Attach the Solenoid (SOL 1) connections on the baler harness (006-763B) and to the solenoids (002-2203F).
7. Attach the Flowmeter (006-4724A) to the Pump Module connection on pump plate assembly.
8. Attach the rubber molded connector on pump plate to the Pump (007-4120DE).
9. Attach moisture disc harness (006-7307RB) connection to the IPM and connect to Moisture Discs
10. Ensure 006-700R terminator is connected to CAN/IDM port on 006-763B harness



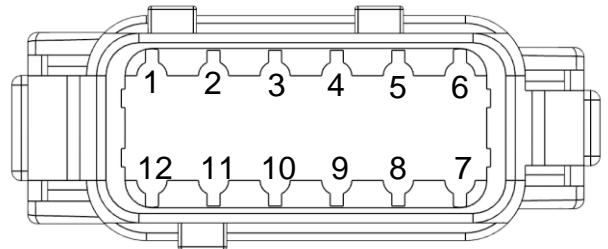
\*Second Solenoid and Harness used only with Optional 700RBHTK High-Output Kit

## Pin Outs

### Integrated Control Module (ICM) on Tractor Harness 006-7651C

(Deutsch Plug Number: DTM06-12SA)

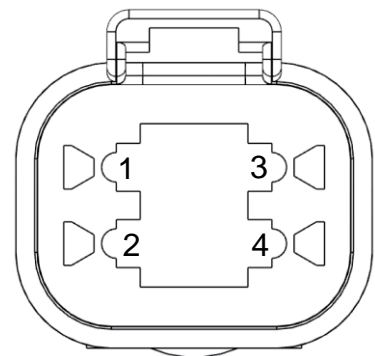
Pin 1	Red	+12V from ECU
Pin 2	Purple	Signal Wire
Pin 3	Red/White	+12V CAN X
Pin 4	Black/White	Ground CAN X
Pin 5	Orange	CAN X Hi
Pin 6	Blue	CAN X Lo
Pin 7	Green	ISO CAN Lo
Pin 8	Yellow	ISO CAN Hi
Pin 9	White	GPS Expansion 1
Pin 10	Gray	GPS Expansion 2
Pin 11	Brown	GPS Expansion 3
Pin 12	Black	Ground from ECU



### ISOBUS Plug on Tractor Harness 006-7651C

(Deutsch Plug Number: DT04-4P)

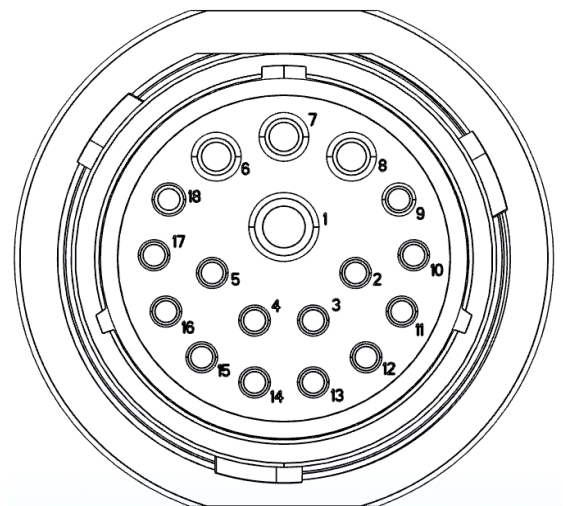
Pin 1	Red	+12V from ECU
Pin 2	Yellow	ISO CAN Hi
Pin 3	Green	ISO CAN Lo
Pin 4	Black	Ground from ECU



### Power / Communication Tractor Harness 006-7651C at Hitch

(Deutsch Plug Number: HDP24-24-18PN)

Pin 1	Not Used	----
Pin 2	Yellow	ISO CAN Hi
Pin 3	Green	ISO CAN Lo
Pin 4	Red	+12V Power to ECU
Pin 5	Black	Ground to ECU
Pin 6	Red	+12V From Battery
Pin 7	Not Used	----
Pin 8	Black	Ground From Battery
Pin 9	Not Used	----
Pin 10	Purple	Signal Wire
Pin 11	Red/White	+12V CAN X
Pin 12	Black/White	Ground CAN X
Pin 13	Orange	CAN X Hi
Pin 14	Blue	CAN X Lo
Pin 15	White	GPS Expansion 1
Pin 16	Gray	GPS Expansion 2
Pin 17	Brown	GPS Expansion 3
Pin 18	Not Used	----

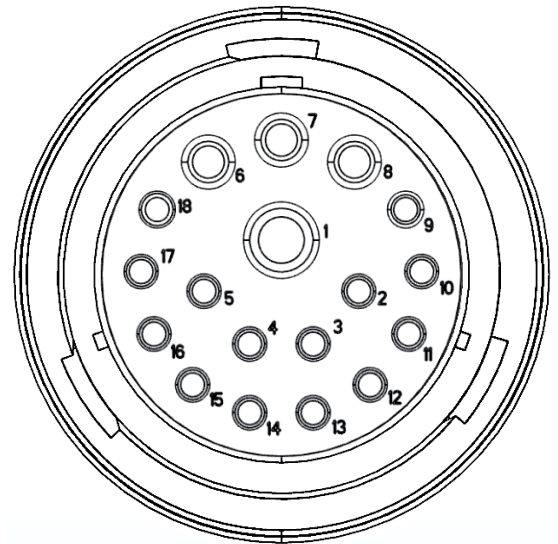


## Pin Outs (continued)

### Power / Communication Baler Harness 006-763B at Hitch

(Deutsch Plug Number: HDP26-24-18SN)

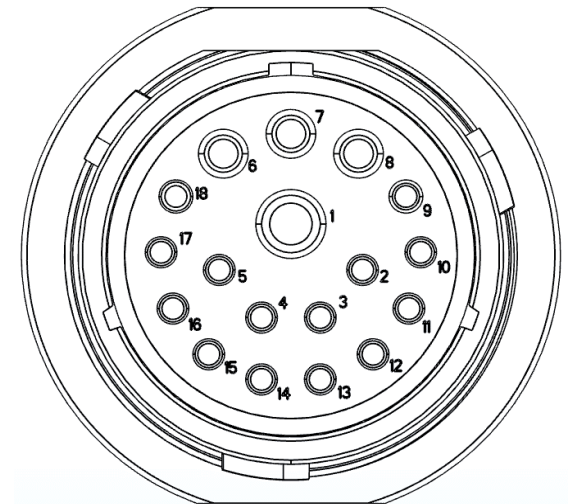
Pin 1	Not Used	----
Pin 2	Yellow	ISO CAN Hi
Pin 3	Green	ISO CAN Lo
Pin 4	Red	+12V Power to ECU
Pin 5	Black	Ground to ECU
Pin 6	Red	+12V From Battery
Pin 7	Not Used	----
Pin 8	Black	Ground From Battery
Pin 9	Not Used	----
Pin 10	Not Used	----
Pin 11	Not Used	----
Pin 12	Not Used	----
Pin 13	Not Used	----
Pin 14	Not Used	----
Pin 15	Not Used	----
Pin 16	Not Used	----
Pin 17	Not Used	----
Pin 18	Not Used	----



### Power / Communication Baler Harness 006-763B at IPM Module

(Deutsch Plug Number: HDP24-24-18PN)

Pin 1	Not Used	----
Pin 2	Yellow	ISO CAN Hi
Pin 3	Green	ISO CAN Lo
Pin 4	Red	+12V Power to ECU
Pin 5	Black	Ground to ECU
Pin 6	Red	+12V From Battery
Pin 7	Not Used	----
Pin 8	Black	Ground From Battery
Pin 9	Not Used	----
Pin 10	Orange/White	+12V Power to EOR
Pin 11	Orange/Black	Ground to EOR
Pin 12	Purple/Green	EOR Signal
Pin 13	Blue/White	EOB Signal
Pin 14	Gray/Red	+12V Power to Solenoid 1
Pin 15	White/Black	Ground to Solenoid 1
Pin 16	Orange/Red	+12V Power to Solenoid 2
Pin 17	White/Black	Ground to Solenoid 2
Pin 18	Not Used	----



\*IPM Module Whip Plug- Pin # 5 Not Used

### Solenoid 1 Plug on Baler Harness 006-763B

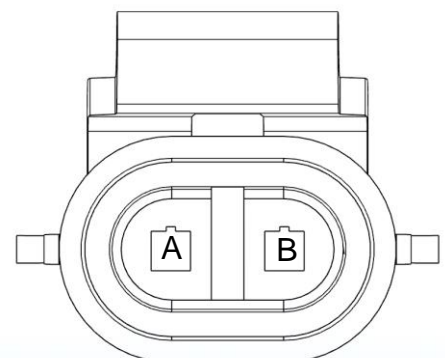
(Deutsch Plug Number: APTIV 12052641)

Pin B	Gray/Red	+12V to Solenoid 1
Pin A	White/Black	Ground to Solenoid 1

### Solenoid 2 Plug on Baler Harness 006-763B

(Deutsch Plug Number: APTIV 12052641)

Pin B	Orange/Red	+12V to Solenoid 2
Pin A	White/Black	Ground to Solenoid 2

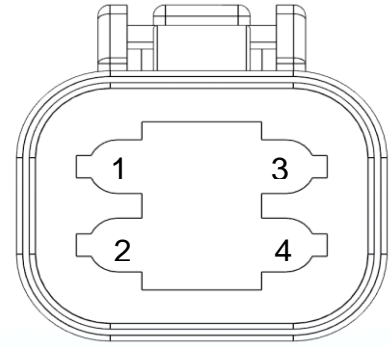


## Pin Outs (continued)

### CAN / IDM on Baler Harness 006-763B

(Deutsch Plug Number: DT06-4S)

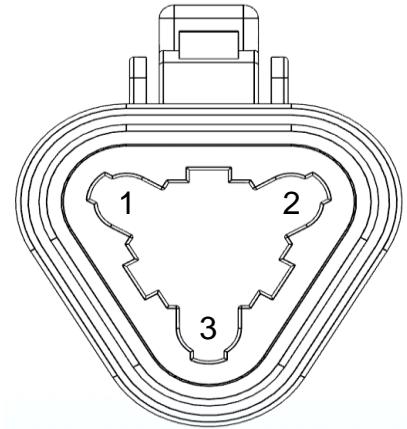
Pin 1	Red	+12V to ECU
Pin 2	Yellow	ISO CAN Hi
Pin 3	Green	ISO CAN Lo
Pin 4	Black	Ground to ECU



### End of Bale Sensor Plug on Baler Harness 006-763B

(Deutsch Plug Number: DT06-3S)

Pin 1	Orange/White	+12V to End of Bale Sensors
Pin 2	Orange/Black	Ground to End of Bale Sensors
Pin 3	Blue/White	Signal



### End of Row Sensors Plug on Baler Harness 006-763B

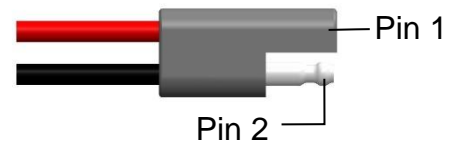
(Deutsch Plug Number: DT06-3S)

Pin 1	Orange/White	+12V to End of Bale Sensors
Pin 2	Orange/Black	Ground to End of Bale Sensors
Pin 3	Purple/Green	Signal

### Pump Connection on 700 Controller Harness

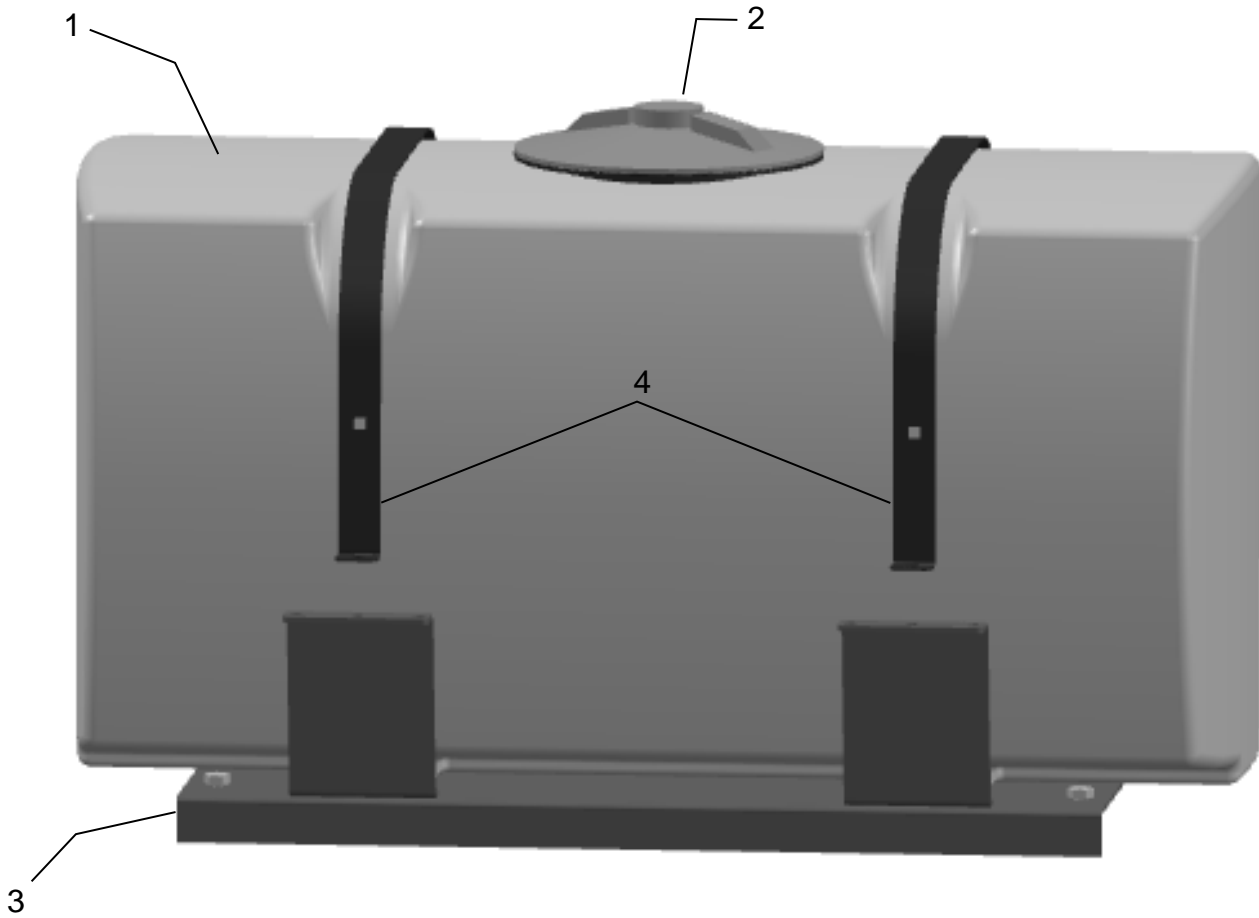
(16 AWG Two-Wire Plug)

Pin 1	Red	Power to Pump
Pin 2	Black	Ground to Pump



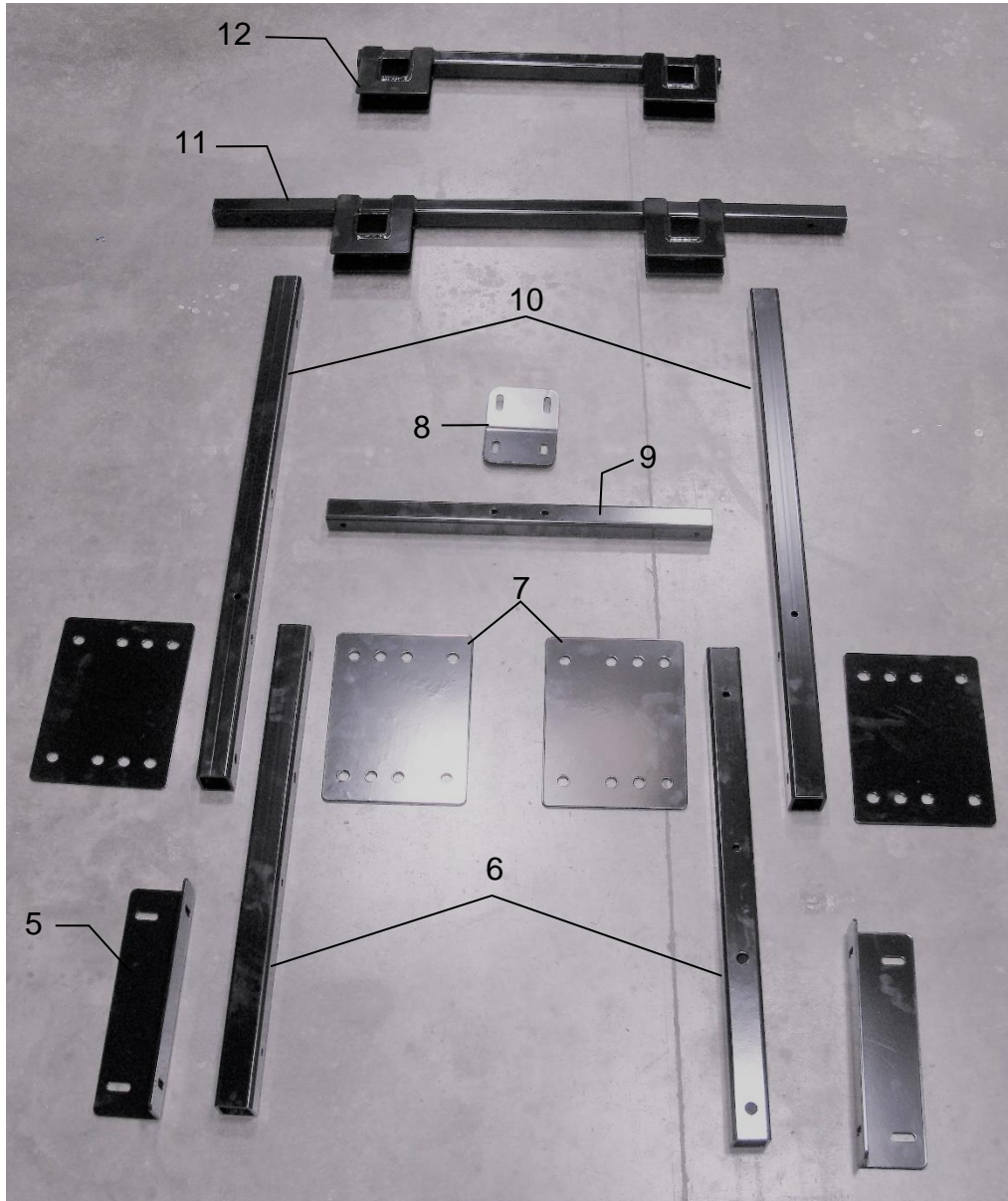


# Model 735Z Base Kit



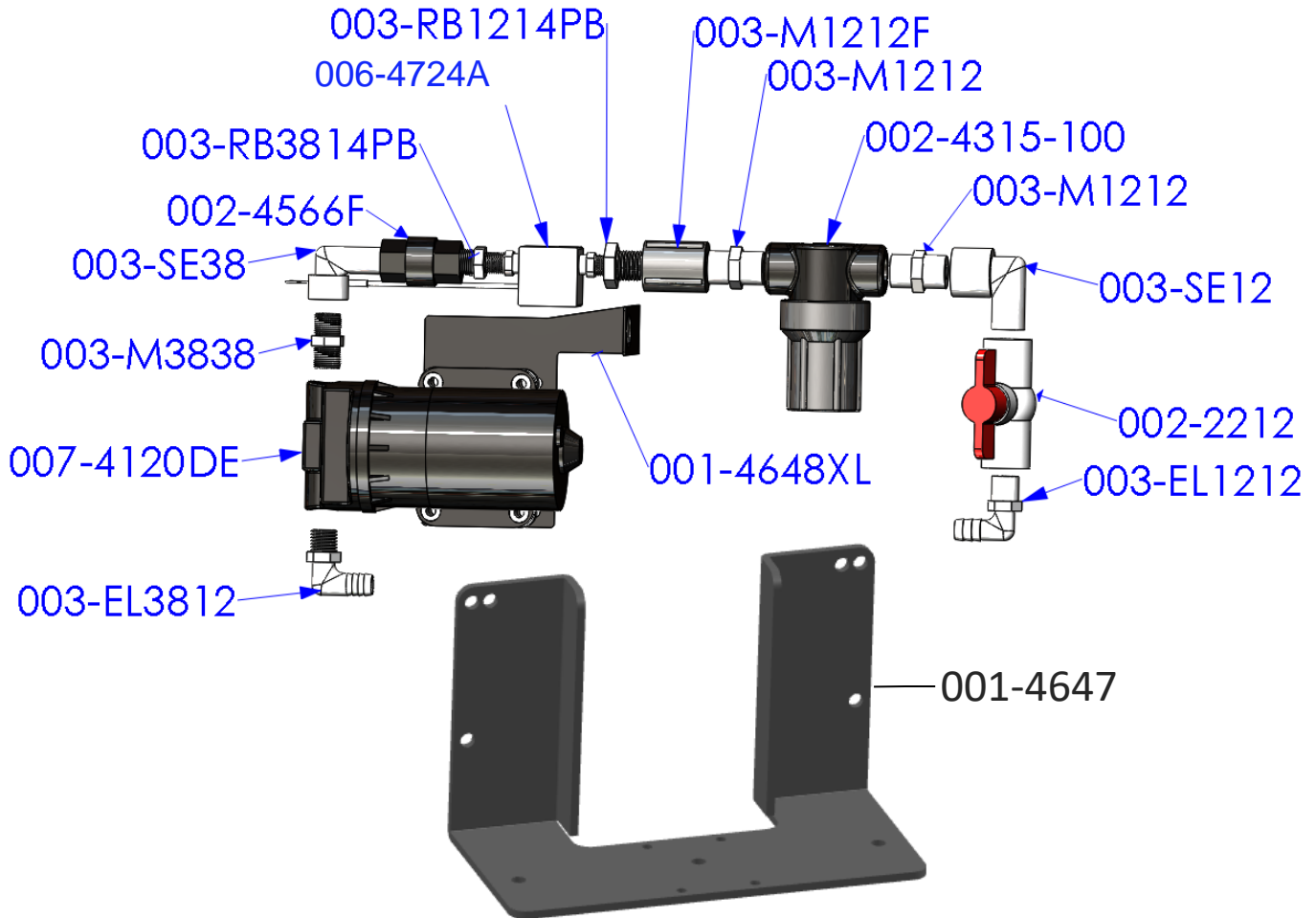
<u>Ref</u>	<u>Description</u>	<u>Part #</u>	<u>Qty</u>	<u>Ref</u>	<u>Description</u>	<u>Part #</u>	<u>Qty</u>
1	50 Gallon Tank	005-9203SQ	1	7	Side Rail Plate	001-4703ZR-E	4
2	Tank Cap, Gasket, & Breather	P05-9022HBG	1	8	Front Mount Support	001-4703ZR-D2	1
3	Tank Saddle	001-4703X	1	9	Front Mount Crossmember	001-4703ZR-D1	1
4	Tank Strap	001-4402	2	10	Long Side Rail	001-4703ZR-C	2
5	Tank Saddle Support	001-4703ZE-G	2	11	Mid Mount	001-4703ZR-B	1
6	Short Side Rail	001-4703ZR-F	2	12	Rear Mount	001-4703ZR-A	1
				NP	Hex Plug	003-F34	1
					Complete Kit	030-0445Z-TK	

## Model 35Z Base Kit (continued)



<u>Ref</u>	<u>Description</u>	<u>Part #</u>	<u>Qty</u>	<u>Ref</u>	<u>Description</u>	<u>Part #</u>	<u>Qty</u>
1	50 Gallon Tank	005-9203SQ	1	7	Side Rail Plate	001-4703ZR-E	4
2	Tank Cap, Gasket, & Breather	P05-9022HBG	1	8	Front Mount Support	001-4703ZR-D2	1
3	Tank Saddle	001-4703X	1	9	Front Mount Crossmember	001-4703ZR-D1	1
4	Tank Strap	001-4402	2	10	Long Side Rail	001-4703ZR-C	2
5	Tank Saddle Support	001-4703ZE-G	2	11	Mid Mount	001-4703ZR-B	1
6	Short Side Rail	001-4703ZR-F	2	12	Rear Mount	001-4703ZR-A	1
				NP	Hex Plug	003-F34	1
					Complete Kit	030-0445Z-TK	

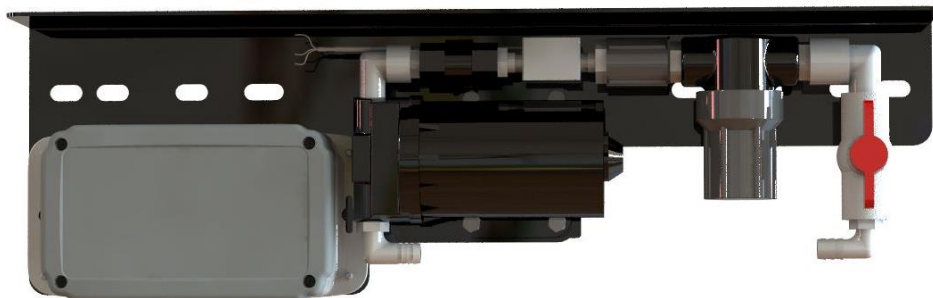
## Parts Breakdown for Pump Assembly



<u>Part#</u>	<u>Description</u>	<u>Qty</u>	<u>Part#</u>	<u>Description</u>	<u>Qty</u>
003-EL3812	3/8" MPT X 1/2" HB Elbow	1	003-M1212	1/2" Union	2
007-4120DE	300 Series Pump	1	002-4315-100	1/2" Line Strainer-100 Mesh	1
003-M3838	3/8" x 3/8" Union	1	003-SE12	1/2" Street Elbow	1
003-SE38	3/8" Street Elbow	1	002-2212	1/2" Ball Valve	1
002-4566F	3/8" Check Valve	1	003-EL1212	1/2" MPT x 1/2" HB	1
003-RB3814PB	RB 3/8" x 1/4" Reducer	1	001-4648XL	300 Pump Support	1
006-4724A	Flow Meter – Deutsch Plug	1	001-4648X	Pump Plate Mount	1
003-RB1214PB	RB 1/2" x 1/4" Reducer	1	003-A1212	Not Pictured	
003-M1212F	1/2" Coupler	1	003-A3812	Not Pictured	

Pump Assembly PMP-7636P (001-4647 Not Included)

## Completed Assembly



\*Note: Due to alternative baler designs, elbow 003-EL3812 can be replaced by straight fitting 003-A3812. As well as elbow 003-EL1212 can be replaced by straight fitting 003-A1212. Both straight fittings are included.

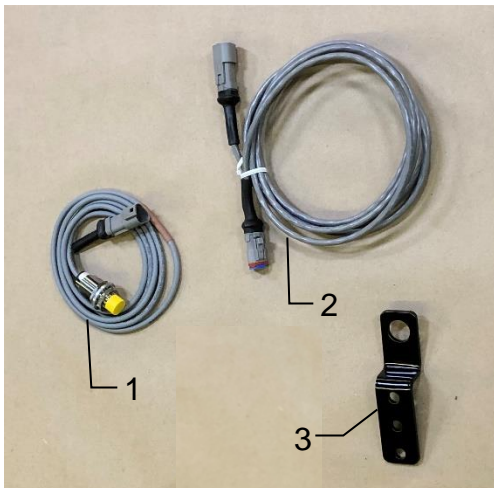
## Control Box and Wiring Harnesses



<u>Ref</u>	<u>Description</u>	<u>Part#</u>	<u>Qty</u>	<u>Ref</u>	<u>Description</u>	<u>Part#</u>	<u>Qty</u>
1	Power Lead Baler 20'	006-762B	1	NP	120 Ohn Resistor	006-700R*	1
2	Power Lead Tractor	006-765IC	1	NP	Dust Plug Kit	006-765DP	1
3	Key Switch Wire	006-765CPH	1	NP	Lightning to USB-A Cable	006-6672USBC	1
4	ISO Pump Module	006-7671RB	1	NP	Optional USB-C to USB-A Communication Cable	006-6672USBX	1
5	ISO Communication Module	006-6673	1				

\*006-700R installation on 006-762B harness is required at all times when operating the small square 700 series applicator

## End of Bale Sensor

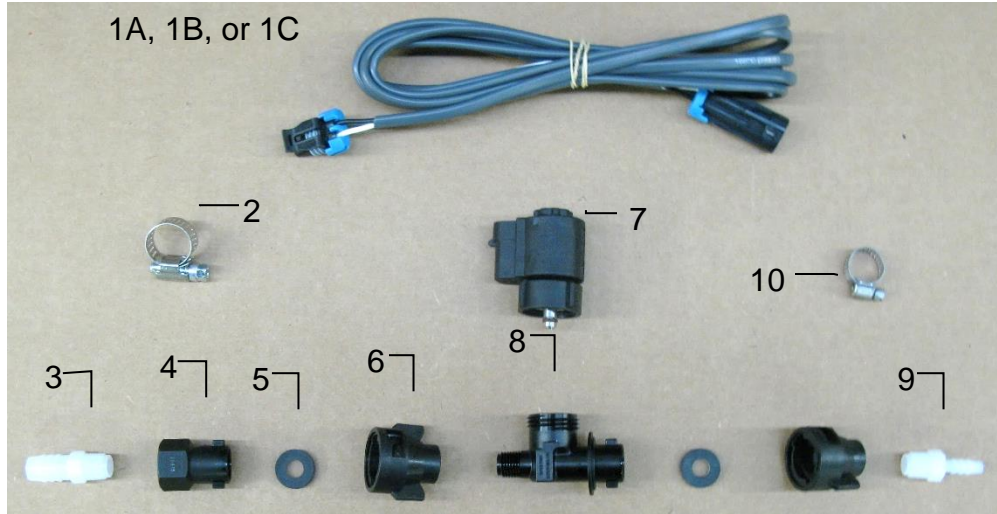


<u>Ref</u>	<u>Description</u>	<u>Part #</u>	<u>Qty</u>
1	End of Bale Sensor	006-7401	1
2	EOB Extension	006-7401EXT	1
3	End of Bale Bracket	001-4648RB	1

Complete Assembly

EOB-7RB-A

## 700 Pulsing Solenoid- Round Balers

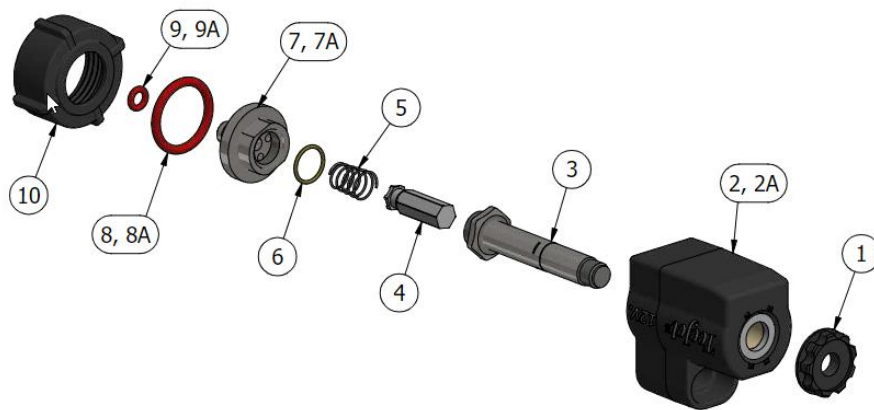


### Solenoid Packages

<u>Ref</u>	<u>Description</u>	<u>Part #</u>	<u>Qty</u>	<u>Ref</u>	<u>Description</u>	<u>Part #</u>	<u>Qty</u>
1A	Solenoid Harness (5')	006-3650-S1		6	1/4" Female Disconnect	004-1207H	2
1B	Solenoid Harness (10')	006-3650-S2		7	Solenoid	002-2203F	1
1C	Solenoid Harness (15')	006-3650-S3		8	Solenoid Valve Body	004-1207VF	1
2	#6 Hose Clamp	003-9003	1	9	1/4" x 1/4" Straight Fitting	003-A1414	1
3	1/4"x1/2" Straight Fitting	003-A1412	1	10	Mini Hose Clamp	003-9002	1
4	1/4" Female Connector	004-1207G	1				
5	Rubber Washer	004-1207W	2				
					Complete Assembly Pkg. A	SOL-3SP-A	
					Complete Assembly Pkg. B	SOL-3SP-B	
					Complete Assembly Pkg. C	SOL-3SP-C	

### Expanded View of Pulsing Solenoid (002-2203F)

Replacement Pulsing Solenoid O-Ring Kit available (002-2203FG)  
(Includes EPDM O-Rings 6, 8, 9 shown below)

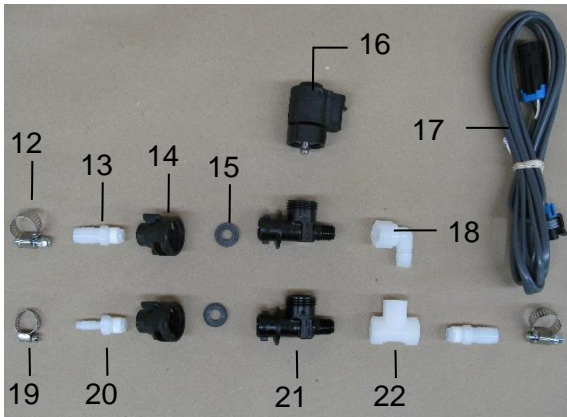


To clean solenoid valves:

The Center Section can be removed from Housing #2 by loosening #1 from #3. Once removed, use wrenches on components #3 and #7 and gently turn to loosen and separate. Soak parts #3-10 in warm soapy water, clean with a soft bristle brush, rinse with clean water to remove buildup before reassembly.

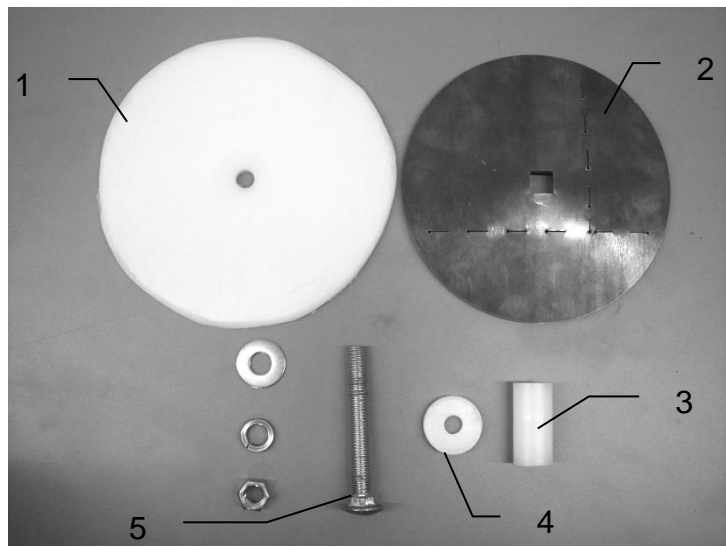
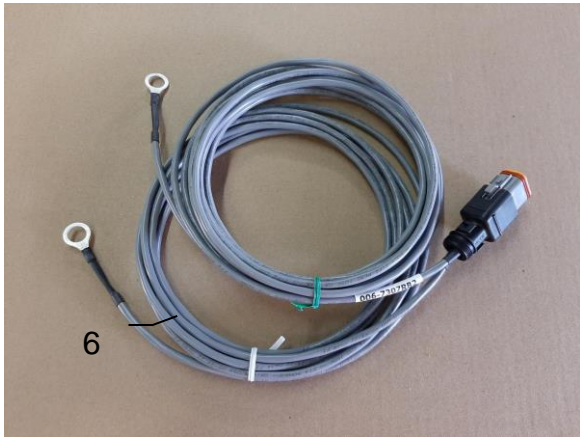


## OPTIONAL High Output Solenoid (Included with 700RBHTK Kit)



<u>Ref</u>	<u>Description</u>	<u>Part #</u>	<u>Qty</u>
12	#6 Hose Clamp	003-9003	2
13	1/4" x 1/2" Straight Fitting	003-A1412	2
14	Female Quick Coupler	004-1207H	2
15	Rubber Washer	004-1207W	1
16	Solenoid	002-2203F	1
17	Solenoid Harness (10')	006-3650-S2	1
18	1/4" Street Elbow	003-SE14	1
19	Mini Hose Clamp	003-9002	1
20	1/4" x 1/4" Straight Fitting	003-A1414	1
21	Solenoid Check Valve	004-1207VF	2
22	1/4" Tee	003-TT14	1

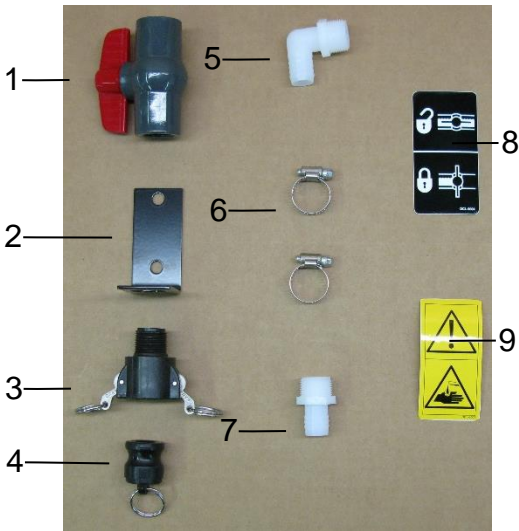
## Moisture Sensors Parts Breakdown



<u>Ref</u>	<u>Description</u>	<u>Part #</u>	<u>Qty</u>	<u>Ref</u>	<u>Description</u>	<u>Part #</u>	<u>Qty</u>
1	Plastic Pad	006-4641F	2	4	Plastic Isolator	006-4641I	2
2	Moisture Disc	006-4641H	2	5	1/2X4 1/2" Carriage Bolt		2
3	Plastic Bushing	006-4641G	2	6	Moisture Cable (both 15')	006-7307RB1	1
Moisture Pad Assembly (Ref 1-5)						030-4643	2
Complete Assembly (Ref 1-6)						MSH-7RB-A	

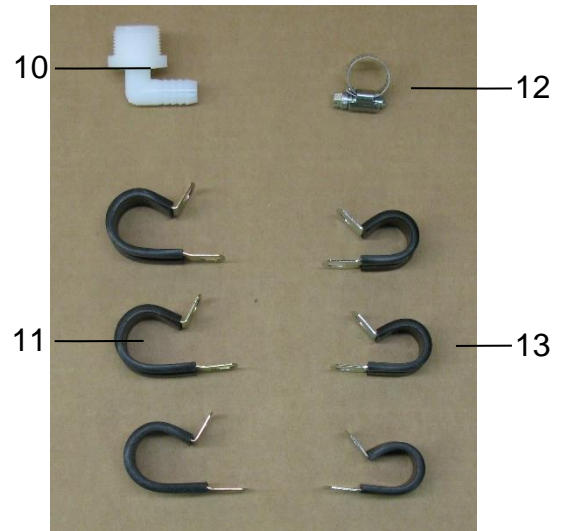
## Parts Bag Packages & Hoses

### PBA-1



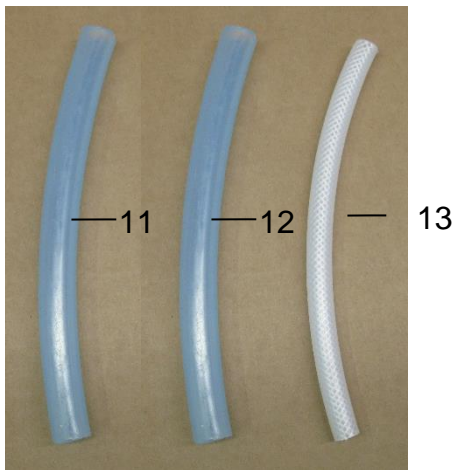
<u>Ref</u>	<u>Description</u>	<u>Part #</u>	<u>Qty</u>
1	3/4" Ball Valve	002-2200	1
2	Valve Holder	001-6702H	1
3	Female Coupler	002-2204A	1
4	Male Shut-Off Plug	002-2205G	1
5	3/4" x 3/4" Elbow	003-EL3434	1
6	#10 Hose Clamp	003-9004	2
7	3/4" x 3/4" Straight Fitting	003-A3434	1
8	Valve Decal	DCL-8004	1
9	Chemical Hazard Decal	DCL-8001	1
Complete Drain Fill Kit		030-0493DFK	

### PBP-16



<u>Ref</u>	<u>Description</u>	<u>Part #</u>	<u>Qty</u>
10	3/4" x 1/2" Elbow	003-EL3412	1
11	3/4" Jiffy Clip	008-9010	3
12	#6 Hose Clamp	003-9003	1
13	Small Jiffy Clip	008-9009	3

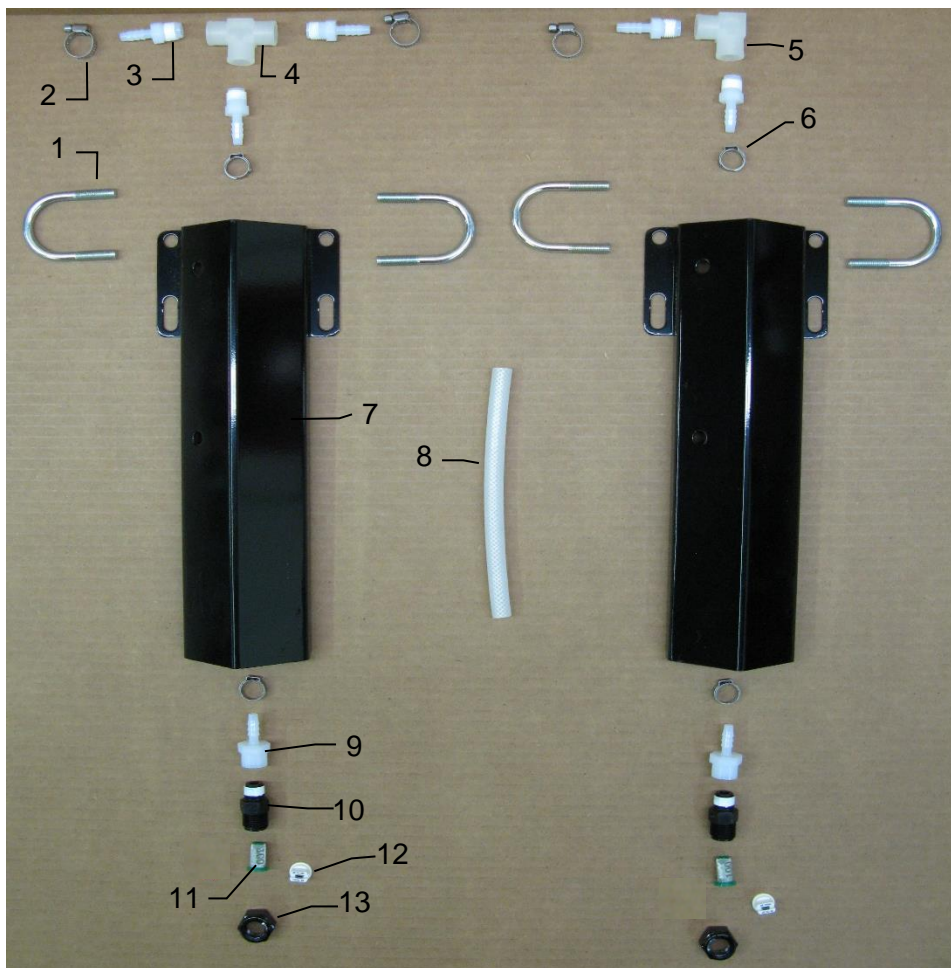
## Hoses



<u>Ref</u>	<u>Description</u>	<u>Part #</u>	<u>Qty</u>
11	1/2" Hose (Tank to Solenoid)	002-9001	15ft
12	3/4" Hose (Drain/Fill Line)	002-9002	6ft
13	1/4" Hose (Solenoid to Tips)	002-9016	6ft

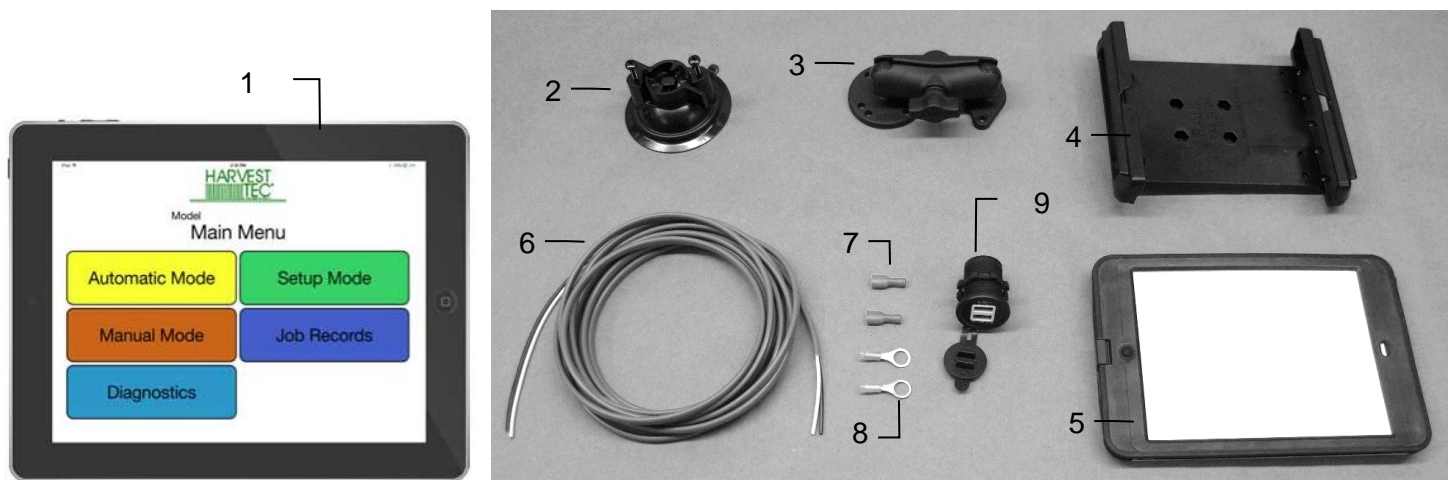


# 735Z Spray Shield



<u>Ref</u>	<u>Description</u>	<u>Part #</u>	<u>Qty</u>	<u>Ref</u>	<u>Description</u>	<u>Part #</u>	<u>Qty</u>
1	U Bolt	001-4714UBS	4	10	Nozzle Body	004-4722	2
2	Hose Clamp	003-9002	2	11	Tip Strainer	004-1203-100	2
3	1/4" x 1/4" Fitting	003-A1414	5	12	Tip – Gray*	004-XR11006VS	2
4	1/4" Sq Tee	003-TT14SQ	1	13	Nozzle Cap	004-4723	2
5	1/4" St Elbow	003-SE14F	1	NP	477 Jiffy Clip	008-9014	2
6	Oetiker Clamp	003-9008	4	* Tip color subject to change			
7	Nozzle Holder	001-4714J	2	Spray Shield Only                  030-4714J-SO			
8	Hose	002-9016	3ft				
9	1/4" x 1/4" Fitting	003-A1414F	2				

## Optional iPad Display Kit



Ref	Description	Part #	Qty		
1	iPad Mini 4 (Refurbished)	006-4670IP	1	Complete iPad Mini Kit	030-4670DK
2	Suction Cup Mount	001-2012SCM	1	(Includes 1-5 and Comm. Cable)	
3	Ram Mount	001-2012H	1		
4	Spring Load Cradle	001-2012SLC	1	Mounting Kit Only	030-2014MK
5	iPad Mini 4 Case	001-2012C4	1	(Includes all parts <u>except</u> iPad Mini 4)	
NP	Lightning Comm. Cable	006-6672USBC	1		
6	Power Harness	006-4723P	1		
NP	4 amp Fuse	Hardware	1		
7	Female Spade Connector	Hardware	2		
8	Eye Loop Connector	Hardware	2		
9	iPad Mini Charger 12V	001-2012P	1		

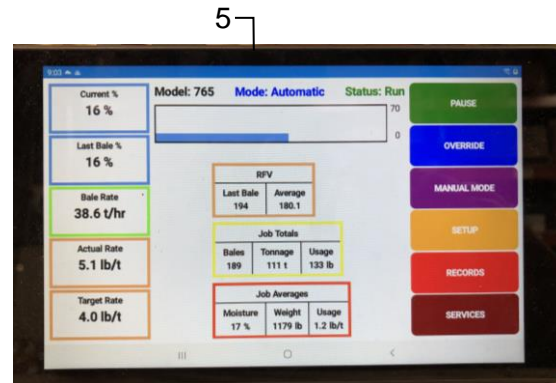
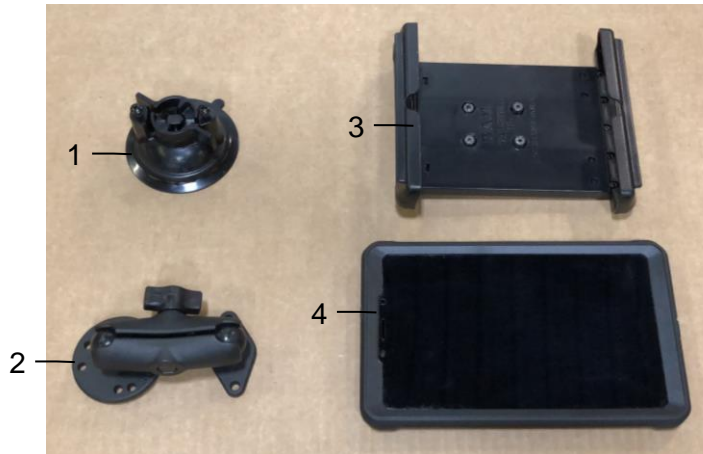
### 12V Power Harness Installation Instructions (included with Mounting Kit Only)

1. Identify 12V power source for wires to connect.
2. Eye loops installed on harness if wiring directly to the battery is desired.
3. Test for key power source if preferred to have power to the USB shut off with the key.
4. Once power source is identified, cut wires to desired length if needed for key power connection.
5. Harness comes with quick connectors the white and black wires.
6. Remove the round locking plastic nut from USB plug before connecting the wires. Black (+) White (-).
7. The wires will then be hooked to the designated terminals on the bottom of the USB plug
8. Drill a 1 1/8" hole in the preferred mounting location. Be sure to clean any sharp edges after drilling.
9. Feed the wires through the mounting hole.
10. If using the round plastic nut to secure plug in place, slide the nut back over the wiring before connecting the wires to powered source.
11. Connect the wires to the identified power source if easier to do so before tightening the plug into place.
12. Tighten plug using either the round plastic nut or mounting plate and two screws, both options supplied.
13. Once connected, hook a USB charging cord into the plug and connect a mobile device/tablet to ensure the plug is operating as you wish (key power working properly if necessary).

NOTE: This plug is not designed to charge two iPads. System damage could occur if this is attempted. System will charge a mobile phone and iPad simultaneously without problem.

\*iPad mini is a trademark of Apple Inc., registered in the U.S. and other countries.

## Optional Android Display Kit (030-1670DK)



<u>Ref</u>	<u>Description</u>	<u>Part #</u>	<u>Qty</u>
1	Suction Cup Mount	001-2012SCM	1
2	Ram Mount	001-2012H	1
3	Spring Load Cradle	001-2012SLC	1
4	Android Case	001-2012A1	1
5	Android Tablet	006-1670AT	1

### Installation Instructions

1. Assemble Cradle (001-2012SLC)
2. Attach round base from ram mount to cradle
3. Attach trapezoid end of ram mount to suction mount
4. Clean glass or metal surface that unit will be attaching to.
5. Add a small amount of water to suction cups rubber surface and attach to surface
6. Turn lock on suction cup mount to secure.
7. Place tablet in cradle and hook USB cable that came with system into it.
8. Run USB cable over to (006-765ICM) control module and plug into USB port that show's a tablet

## Optional Harvest Tec Display Kit (030-7670DK)



<u>Ref</u>	<u>Description</u>	<u>Part #</u>	<u>Qty</u>
1	Suction Cup Mount	001-2012SCM	1
2	Ram Mount	001-2012H	1
3	Harvest Tec Display	006-765GVT	1
4	Display Harness	006-765GH	1
5	Mounting Plate	001-700GH	1
NP	700 Series Resistor	006-700R	1

### Installation Instructions

1. Identify 006-765GH harness connection to 006-765IC tractor harness.
2. Connect harness to the Harvest Tec Display before tightening into place.
3. Tighten the mounting and display. Streamline harness, as necessary.
4. Once connected, power cycle system and ensure display is working properly.

**NOTE: CANNOT OPERATE WITH BOTH HARVEST TEC DISPLAY AND BALER VT CONNECTED AT THE SAME TIME.**

## **Harvest Tec LLC. Warranty and Liability Agreement**

Harvest Tec, LLC. will repair or replace components that are found to be defective within 12 months from the date of manufacture. Under no circumstances does this warranty cover any components which in the opinion of Harvest Tec, LLC. have been subjected to negligent use, misuse, alteration, accident, or if repairs have been made with parts other than those manufactured and obtainable from Harvest Tec, LLC.

Our obligation under this warranty is limited to repairing or replacing free of charge to the original purchaser any part that in our judgment shows evidence of defective or improper workmanship, provided the part is returned to Harvest Tec, LLC. within 30 days of the failure. If it is determined that a non-Harvest Tec branded hay preservative has been used inside the Harvest Tec applicator system where the failure occurred, then Harvest Tec reserves the right to deny the warranty request at their discretion. Parts must be returned through the selling dealer and distributor, transportation charges prepaid.

This warranty shall not be interpreted to render Harvest Tec, LLC. liable for injury or damages of any kind, direct, consequential, or contingent, to persons or property. Furthermore, this warranty does not extend to loss of crop, losses caused by delays or any expense prospective profits or for any other reason. Harvest Tec, LLC. shall not be liable for any recovery greater in amount than the cost or repair of defects in workmanship.

There are no warranties, either expressed or implied, of merchantability or fitness for particular purpose intended or fitness for any other reason.

This warranty cannot guarantee that existing conditions beyond the control of Harvest Tec, LLC. will not affect our ability to obtain materials or manufacture necessary replacement parts.

Harvest Tec, LLC. reserves the right to make design changes, improve design, or change specifications, at any time without any contingent obligation to purchasers of machines and parts previously sold.

Revised 4/17

**HARVEST TEC, LLC.**  
**P.O. BOX 63**  
**2821 HARVEY STREET**  
**HUDSON, WI 54016 USA**  
PHONE: 715-386-9100  
FAX: 715-381-1792  
Email: [info@harvesttec.com](mailto:info@harvesttec.com)