



Service Parts Bulletin

030-4646P Pump Plate Assembly

for preservative application systems

Simplify all Harvest Tec 3-pump applicator system repairs with the 030-4646P Pump Plate Assembly.

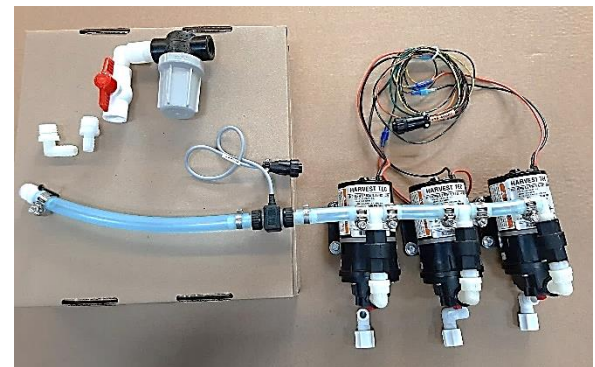
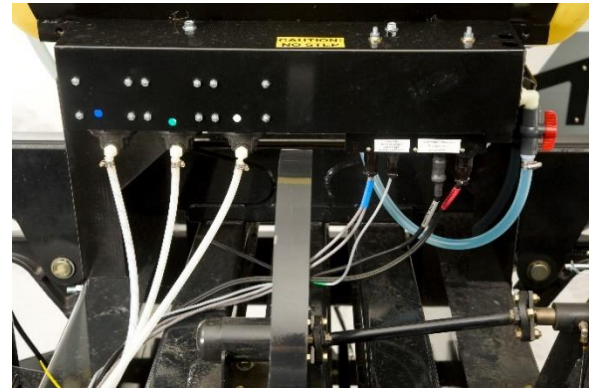
This pre-assembled replacement pump plate assembly allows for simplified repair of all 3-pumps and flow meter:

- Fits all 3-pump systems built from 2004 – 2020
- Includes 3 pumps, check valves, flow meter, pump harness, filter bowl assembly and replacement tank supply line and pump spray line fittings
- Components are pre-assembled and ready for installation
- Parts breakdown found [HERE](#)

Features/Benefits

- Avoid down time
- Easy to install – no modifications required to current pump plate
- Old pumps and filter bowl can be kept as spares
- No hoses to cut
- Avoid preservative spills when replacing*

*Tank will need to be emptied if replacing ball valve- includes two replacement hose barb fitting options for tank supply line.



WATCH VIDEO - See how to easily replace a 3 pump assembly [HERE](#)
or search our YouTube channel for 'Harvest Tec 4646P Pump Plate Assembly'

- Replacement Hose Bundles Also Available -

Replacement 3-Hose Bundle replaces each of the 1/4" braided hoses between the Pumps and the Spray Shield: (one of each barided hose in bundle- white, blue striped and green striped)

- 030-9016LS Large Square Baler Hose Bundle- 35' lengths of all 3 hoses
- 030-9016RB Round Baler Hose Bundle- 15' lengths of all 3 hoses
- 030-9016SS Small Square Baler Hose Bundle- 20' lengths of all 3 hoses

See your specific baler's spray shield Installation kit for additional replacement fittings.

For more information, contact Harvest Tec www.harvesttec.com 715.386.9100

Updated 10/4/24