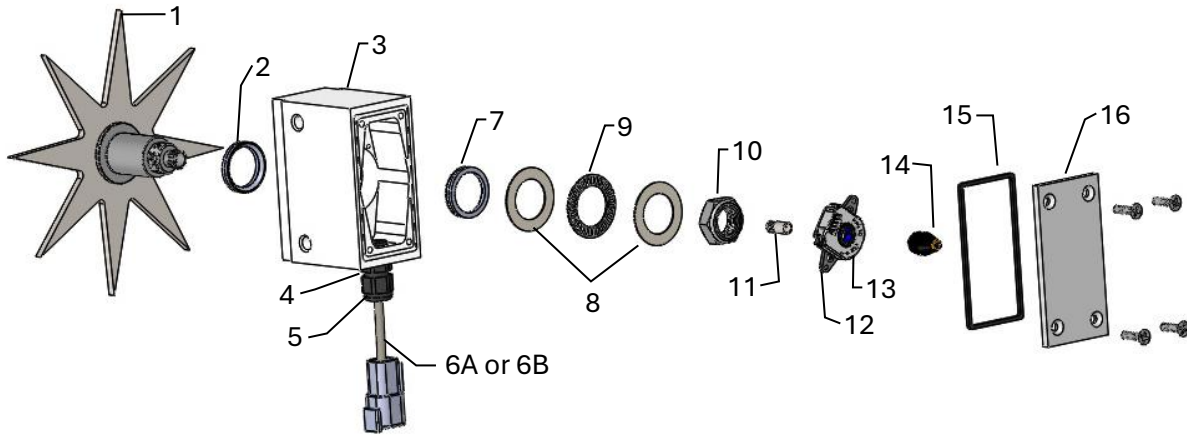
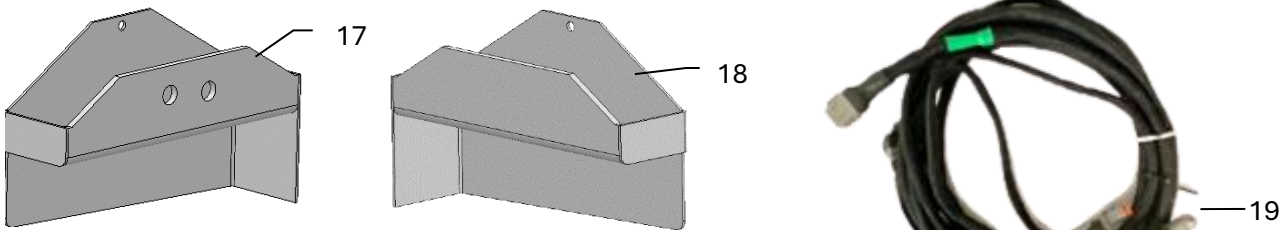


Star Wheel Sensors- 700 Series



<u>Ref</u>	<u>Description</u>	<u>Part#</u>	<u>Qty</u>	<u>Ref</u>	<u>Description</u>	<u>Part#</u>	<u>Qty</u>
1	Star Wheel	006-4642US	1	10	Star Wheel Nut	006-4642U	1
2	Dust Seal Gasket	006-4642UG	1	11	Swivel Insert	006-4642B	1
3	Star Wheel Block (Avail. in 2024 Style Only)	006-4642UB	1	12	Encoder Mount	006-4512P	1
NP	3/8" Grommet Nut	008-0821B	1	13	Encoder	006-4512E	1
4	3/8" Grommet Seal	008-0821G	1	14	Electric Swivel	006-4642A	1
5	3/8" Comp. Grommet	008-0821A	1	15	Star Wheel Block Gasket (Fits Pre-2024 Block Style)	006-4642UG	1
6A	Encoder Harness Plug (6 Pin)	006-7307EM	1	15	Star Wheel Block Gasket (Fits 2024 and Newer Blocks)	006-4642UG2	1
6B	Moisture Harness Plug (2 Pin)	006-7307M	1	16	Block Cover (Fits Pre-2024 Block Style)	006-4642UC	1
7	Spacer (only used in some of the pre-2024 blocks)	006-4642UBS	1	16	Block Cover (Fits 2024 and Newer Block Style)	006-4642UC2	1
8	Thrust Bearing Washer	006-4642TA	2				
9	Thrust Bearing	006-4642TB	1				
					Bearing Rebuild Kit (parts 2, 7-10)	006-4642UK	
					Complete Assembly w/Encoder	030-4642UE	
					Complete Assembly No Encoder	030-4642U	

Twine Diverters and Moisture Harness



<u>Ref</u>	<u>Description</u>	<u>Part #</u>	<u>Qty</u>
17	Twine Diverter- Right	001-4644	1
18	Twine Diverter- Left	001-4645	1
19	Moisture Harness- Standard (12' and 13' Section lengths)	006-7307EM2	1
19	Moisture Harness- Long (16' and 18' section lengths)	006-7307EM3	1

Complete Moisture Kit* -Standard
Complete Moisture Kit*- Long

MSH-LS-STD
MSH-LS-EXT

*Complete Moisture Kits include encoder star wheel, non-encoder star wheel, left and right twine diverters and long or std. moisture harness.