



2023 Product Bulletin

HT200A2 Moisture Sensor

The most efficient, cost-effective moisture monitor with industry leading accuracy now available with seamless installation.

Using the patented star wheel side-to-side moisture reading technology, the dual star wheels read crop moisture across the width of the bale in the chamber via moisture sensing dual star wheel sensors for all MF2233/2234/2234XD/2244 balers. The sensor will read crop moisture from 7% up to 70% for those customers producing dry hay as well as high moisture bales. Positioned directly behind the knotters the dual star wheels provide the most instantaneous windrow moisture 3 flakes behind the baler pickup.

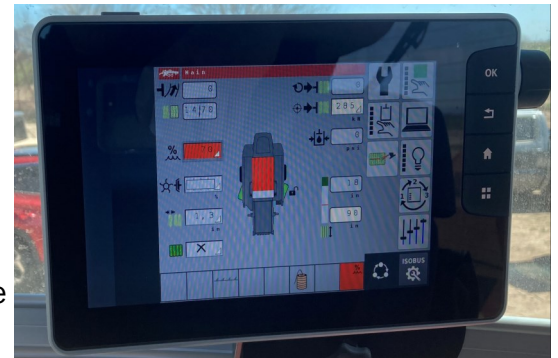
Features of the new HT200A2 on baler moisture sensor:

- Plug and play – utilize factory plugs & harnesses assembled on baler as standard equipment
- Powered thru baler ISOBUS – no additional tractor power harness required
- Instantaneous and bale average moisture displayed
- Most instantaneous windrow moisture reading in the industry.
- Install and activate in less than 15 minutes
- Start baling and have visibility of your bale moisture immediately



The optional HT238DM Dye Marker Accessory can be added to the HT200A2 kit that will mark every bale that is above a set moisture with a red, food-grade stripe.

The bale is marked upon a high moisture reading, allowing the operator to easily identify those bales that are above their own pre-determined moisture threshold. The food-grade dye mixes with water and applies up to 60 bales and is only triggered 1 time per high moisture occurrence per bale.



Looking for more?

[Click here](#) for the latest informational video on the HT200A2 Moisture Sensor.



AGCO Reserves the right to rescind or change this offer at any time.
For more information, contact your FAM or IAM.
US & Canada Bulletin No:0523H2266
05/30/2023



2023 New Product Bulletin

HT200A2 Moisture Sensor

The Dye Marker Accessory consists of a tank, pump, plumbing/ nozzles, harness, and mounts on the baler. The spray option can be activated by turning ON the feature in the baler settings and simply setting the High moisture threshold you want to identify.



PART NUMBER INFORMATION

Large Square Balers

- HT200A2 –Sensor kit includes Moisture Module, 2 star wheels, 2 twine diverters, and mounting hardware
- Models – AGCO 2233, 2234, 2234XD, 2244
- Do not order if fully automatic applicator is desired. See Hayboss Selection guide for applicator kits

Accessories

- HT238DM – Dye Marker Accessory. Connection at Right Hand Starwheel to baler harness
- HT0800 – Red Dye package for Dye Marker Kit. Mixes with water, marks 50-60 bales

Understand the difference for future automatic applicator expansion:

HT700A – introduced in 2021 for all 21/2200 series balers and includes tractor power harness required for power supplied to IPM module located on baler. Lower backend cost to upgrade to fully automatic applicator. Fully integrated into baler ISOBUS. Provides separate Object Pool for operation.

HT200A2 – Lower up front kit cost and uses power from baler. Greater backend cost to upgrade to fully automatic applicator and requires tractor power harness when upgrading. Fully integrated into baler ISOBUS. No additional object pool on baler monitor. Separate Object Pool for operation ONLY if upgraded to fully automatic applicator. Specific to 2023 and newer Model Year balers.