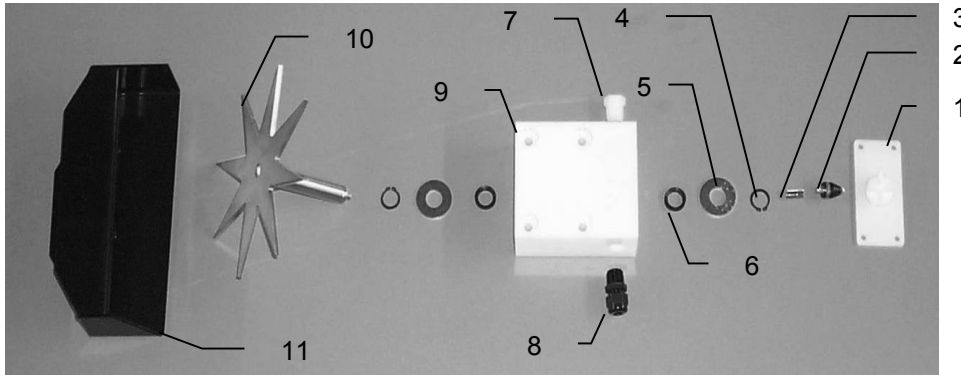
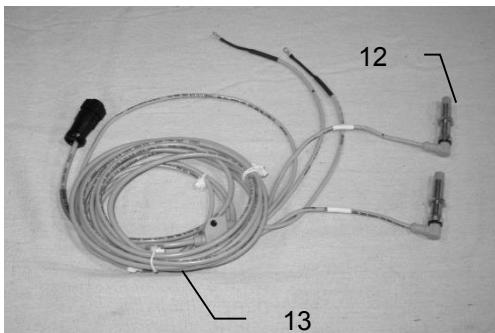


Parts Breakdown

Star Wheels and Bale Rate Sensors

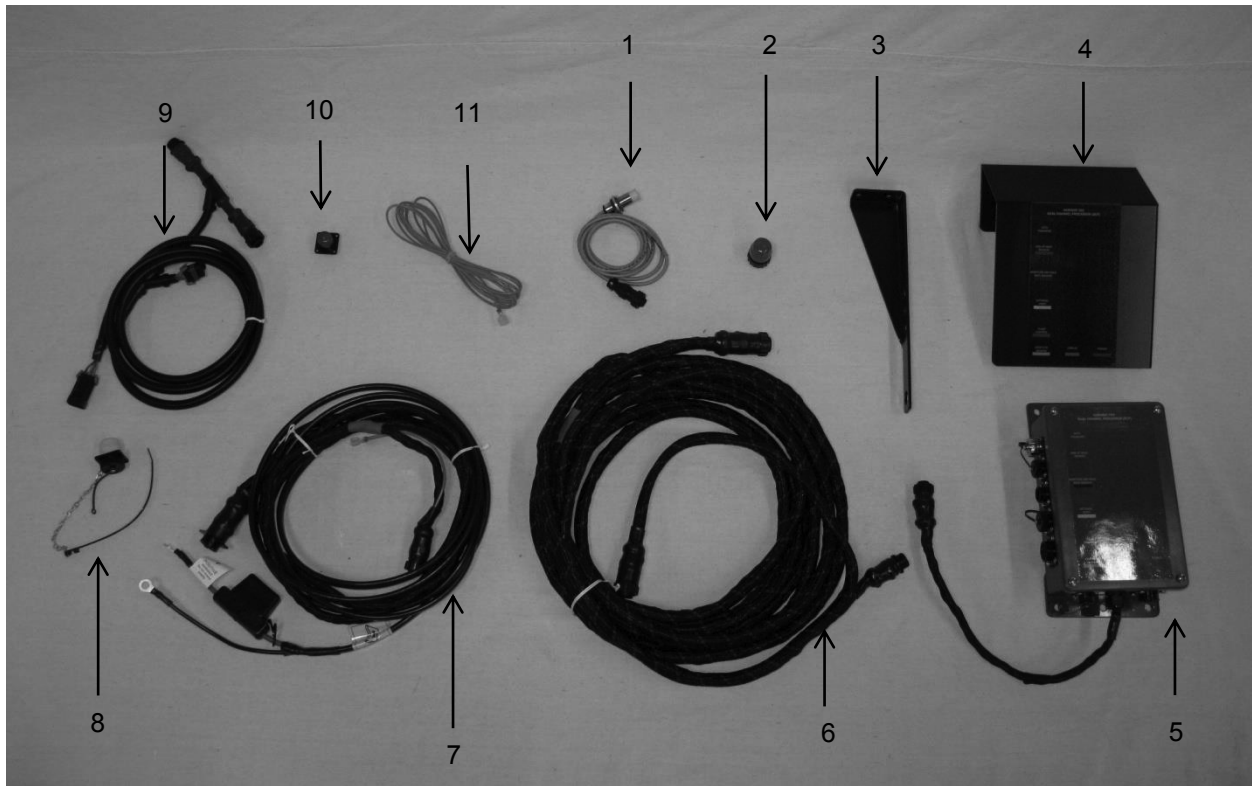


<u>Ref</u>	<u>Description</u>	<u>Part#</u>	<u>Qty</u>	<u>Ref</u>	<u>Description</u>	<u>Part#</u>	<u>Qty</u>
1	Block cover	006-4641B	2	9	Star wheel block	006-4641A	2
2	Electronic swivel	006-4642A	2	10	Star wheel sensor	030-4641C	2
3	Swivel insert	w/ Ref # 10	2	11	Twine guard-left for AGCO	001-4645H	1
4	Snap ring (per side)	006-4641K	2		Twine guard-right for AGCO	001-4644H	1
5	Washer (per side)	w/006-4641K	2		has bale rate sensor		
6	Dust seal (per side)	w/006-4641K	2		holes in it		
7	Plug fitting	003-F38	2	1-10	Star wheel assembly	030-4641	2
8	Wiring grommet	008-0821A	2				



<u>Ref</u>	<u>Description</u>	<u>Part#</u>	<u>Qty</u>
12	Bale rate sensor	006-7303S	2
13	Moisture and bale rate harness	006-7303H	1

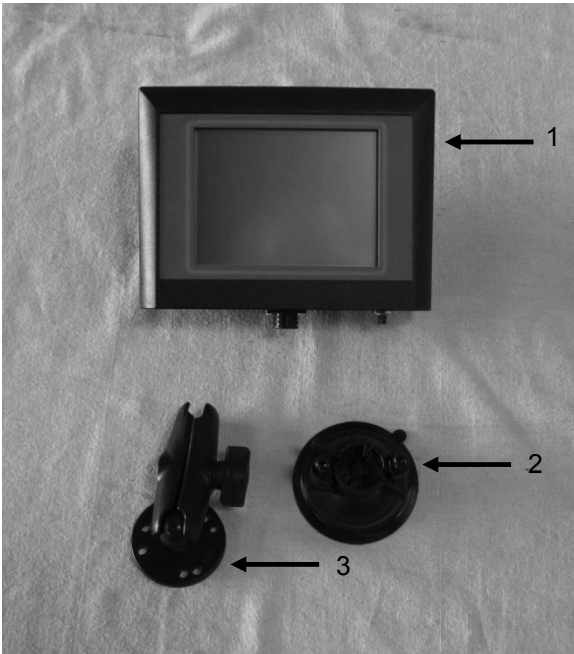
Parts Breakdown for 600A Series Control and Harnesses



<u>Ref</u>	<u>Description</u>	<u>Part Number</u>	<u>Qty</u>
1	End Of Bale Sensor	006-7400	1
2	Terminating Connector w green cap	006-5650Z	1
3	End of Bale Sensor Bracket	001-4648	1
4	DCP Shield/Cover	001-5650X	1
5	DCP Main Control LS 600 AUTO	006-6671LS	1
6	DCP Baler Harness 30 FT	006-6650LS2	1
7	DCP Tractor Harness	006-6650TM	1
8	Dust Plugs	006-5651PLUGS	1
9	DCP Baler Interface Harness	006-6650VA	1
10	DCP TSD Terminating Resistor w/red cap	006-6650Z	1
11	Key Switch Wire	006-5650K	1
	AGCO 2100 Series Balers Pre 2012 need	006-6650VAX	

For AGCO part cross-reference visit: www.harvesttec.com/system.html

Optional Touch Screen Display (TSD)



1 Touch Screen Display	006-6670
2 Suction Cup Mount	001-2012SCM
3 RAM Mount	001-2012H
Complete Kit	030-5670A

Optional Bluetooth Receiver



Part #: 030-6672A