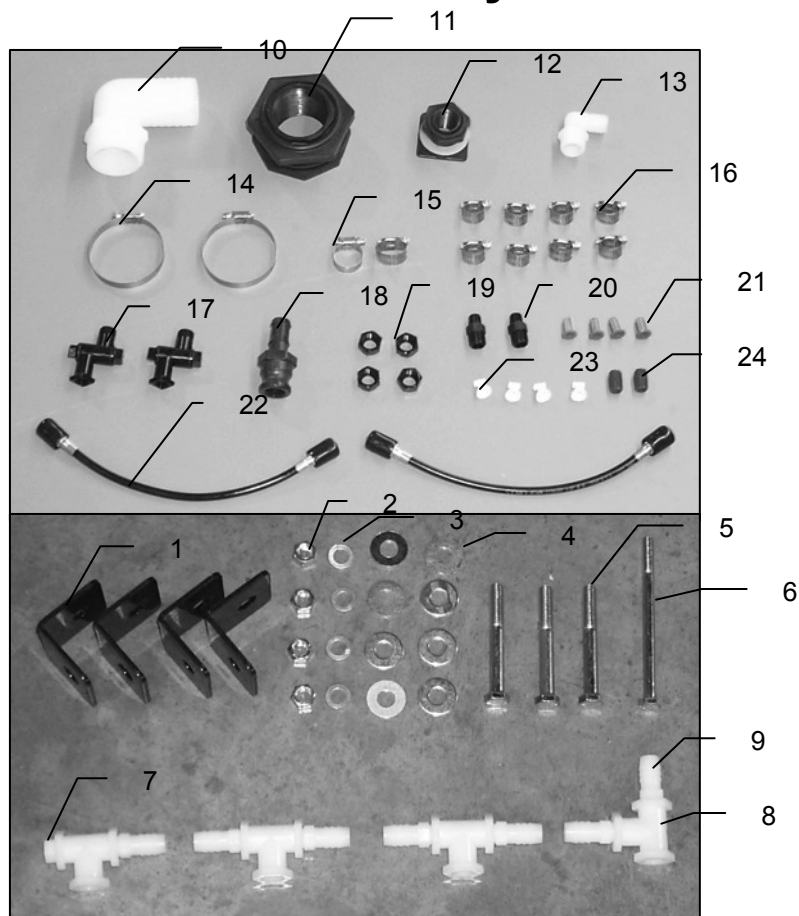


Parts Breakdown-Parts Bag and Auxiliary Nozzle Assembly



<u>Ref #</u>	<u>Description</u>	<u>Part #</u>	<u>Qty</u>	<u>Ref #</u>	<u>Description</u>	<u>Part #</u>	<u>Qty</u>
1	Aux. Nozzle mounts	001-7149	4	16	#6 hose clamp	003-9003	8
2	3/8" nuts			17	Swivel body	004-4733	2
3	3/8" lock washers			18	3/4" cam coupler	002-2204D	1
4	3/8" washers			19	Nozzle caps	004-4723	4
5	3/8" X 3" bolts			20	Nozzle body	004-4722	2
6	3/8" X 4" bolts			21	Tip strainer	004-1203-100	4
7	1/4" plug	003-F14	1	22	Cross tube hose	002-7104B	12
8	1/4" tee	003-TT14	4	23	Tips	004-TT11008VP	4
9	1/4" MPT x 1/2" hose barb	003-A1412	8	24	1/4" nipple	003-M14	2
10	2" elbow	003-EL2020	1	NP	Grease gun adap.	008-7121G	1
11	2" tank fitting	005-9102	1	NP	Loc Tight	008-7147LT	1
12	3/4" tank fitting	005-9100	1	NP	Jiffy clip 1"	008-9009	2
13	3/4" elbow fitting	003-EL3434	1	NP	Jiffy clip 3/4"	008-9010	4
14	#40 hose clamp	003-9006	4	NP	Jiffy clip 2-3/8"	008-9238	2
15	#10 hose clamp	003-9004	12				